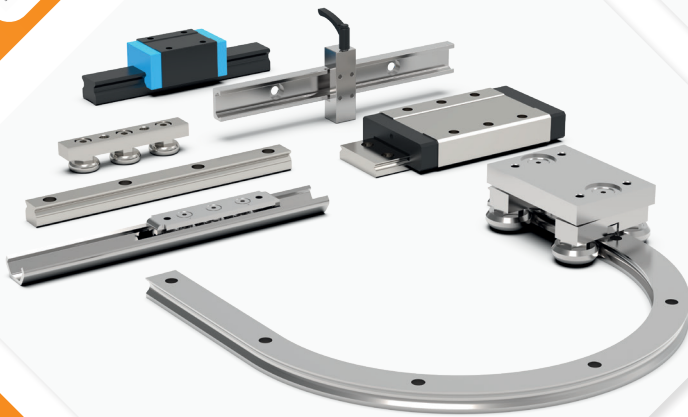




Automotion[®]
AN ESSENTRA COMPANY



VIEW THE FULL RANGE



Linear Motion Components

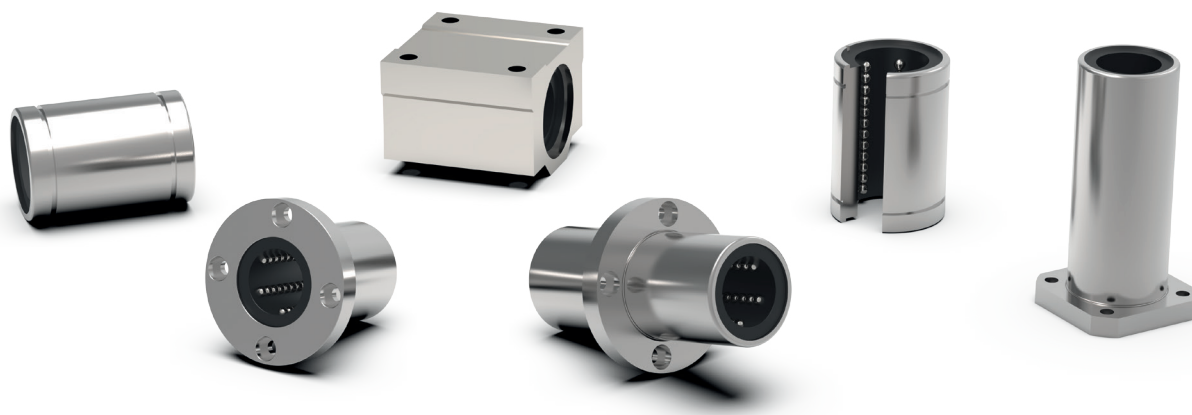
LINEAR | COMPACT | X RAILS | CURVED | LEAD SCREWS | BALL SCREWS | SHAFTS | BEARINGS | CROSSED ROLLER RAILS & TABLES | TELESCOPIC SLIDES

www.automotioncomponents.co.uk | 0333 207 4498

LIN 02/24

AN INTRODUCTION TO LINEAR COMPONENTS

LINEAR RAILS	_____	4-13
COMPACT RAILS	_____	14-20
X RAILS	_____	21-23
CURVED RAILS	_____	24-27
LEAD SCREWS	_____	28-32
BALL SCREWS	_____	33-36
SHAFTS	_____	37-40
BEARINGS	_____	41-44
CROSSED ROLLER RAILS & TABLES	_____	45-46
TELESCOPIC SLIDES	_____	47-49





Automation
AN ESSENTRA COMPANY

REQUEST A CALLBACK!

SPEAK TO ONE OF OUR FRIENDLY
TEAM SPECIALISTS BY HEADING TO

automationcomponents.co.uk/request-a-callback

Automation
AN ESSENTRA COMPANY

Visit Site | New Account

Request a Callback

Fill in the form below and one of our team members will be in touch very soon.

- STREAMLINE ORDERING
- HIGH QUALITY PRODUCTION
- TECHNICAL SALES SUPPORT
- BESPOKE CAPABILITIES

First name* | Last name*

Email*

Phone number

Company name*

Street address

Street address 2

County | Postal code

Company Size
Please Select

Industry
Please Select

Enquiry type
Please Select

Automation Components, part of the Wixroyd Group, is committed to protecting and respecting your privacy, and we'll only use your personal information to administer your account and to provide the products and services you requested from us. From time to time, we would like to contact you about our products and services, as well as other content that may be of interest to you. If you consent to us contacting you for this purpose, please tick below to say how you would like us to contact you.

I agree to receive other communications from Wixroyd Group.

In order to provide you the content requested, we need to store and process your personal data. If you consent to us storing your personal data for this purpose, please tick the checkbox below.

I agree to allow the Wixroyd Group to store and process my personal data.*

You may unsubscribe from these communications at any time. For more information on how to unsubscribe, our privacy practices, and how we are committed to protecting and respecting your privacy, please review our Privacy Policy.

protected by reCAPTCHA
Privacy - Terms

Submit

Copyright © 2023 automationcomponents.co.uk
Wixroyd Group Ltd, Metro House, Glenmore Business Park, Chichester, West Sussex
Company registration: 11255888



◀ ON MOBILE?

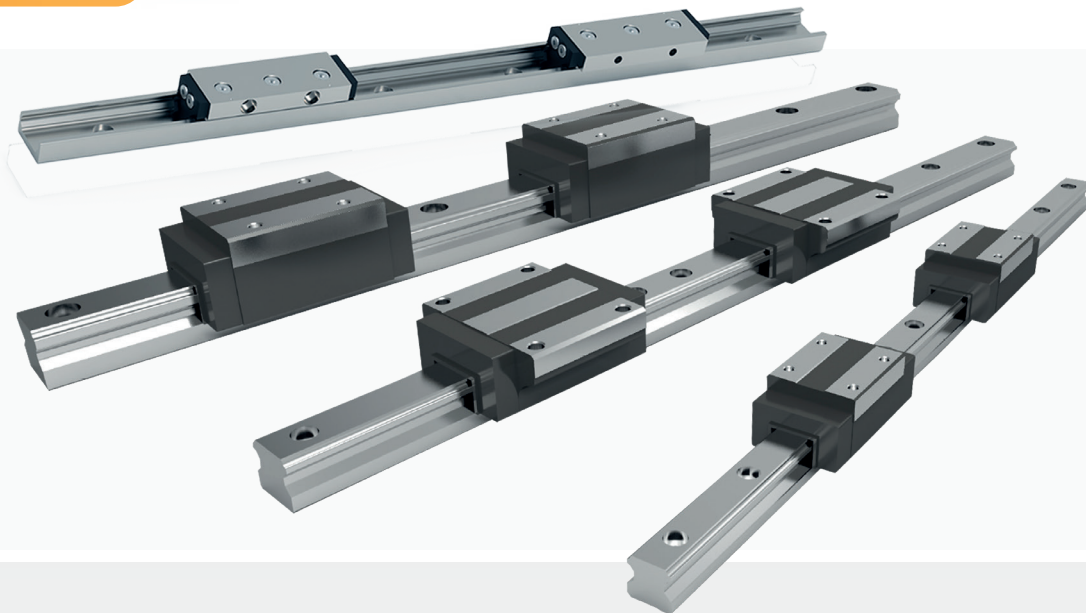
SCAN HERE TO HEAD
DIRECT TO FORM

LINEAR RAILS

What is a Linear Rail?

A linear rail is a system which facilitates linear movement and supporting of the load of a piece of equipment, either vertically or horizontally. As specialists in linear motion systems, we offer a choice of materials and sizes. Whether your application requires lightweight aluminium rails for aviation purposes or stainless steel components for resistance against water and corrosive chemicals, our range caters to diverse needs. Our knowledgeable technical engineers are always on hand to provide assistance.

VIEW THE FULL RANGE



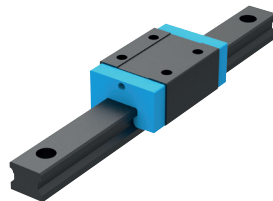
 AN ESSENTRA COMPANY



Miniature Rail Carriages - L1010.C

Standard rail width. Miniature linear guideways are for precise, repeatable linear positioning. Space saving and cost efficient.

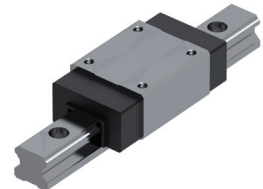
 AN ESSENTRA COMPANY



Unflanged Carriages - Standard - L1016.U

Blackened. Ball chain linear guideways. Very accurate and can handle high load capacities, providing smooth, consistent linear motion.

 AN ESSENTRA COMPANY



Unflanged Carriages - Low - L1016.UL

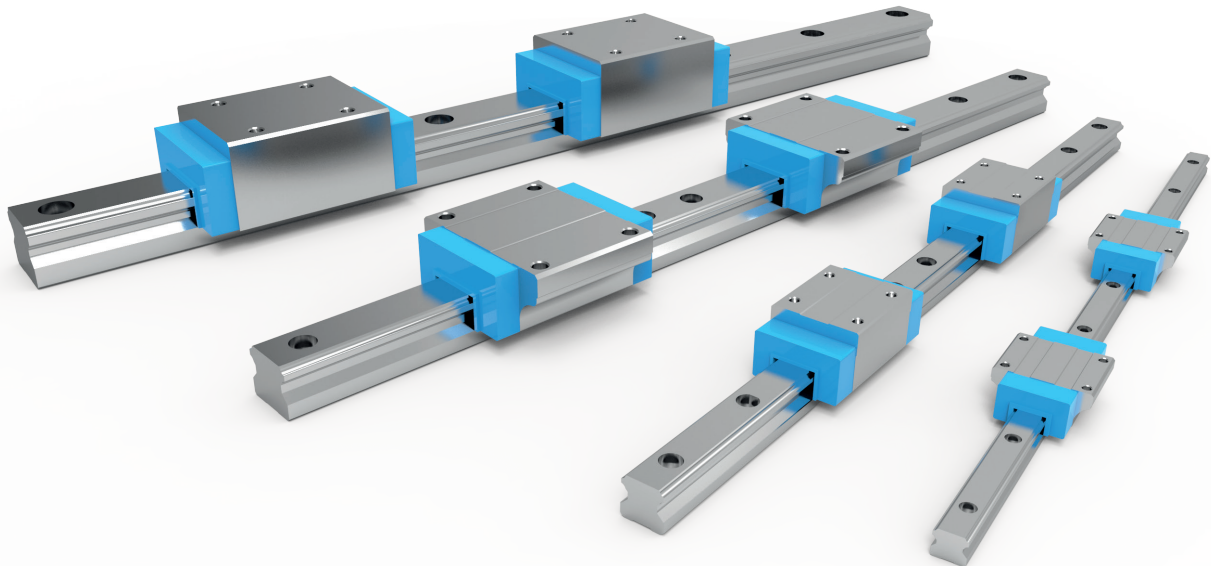
With retained ball cage. Ball chain linear guideways. Very accurate and can handle high load capacities, providing smooth, consistent linear motion.

AN OVERVIEW OF LINEAR GUIDES

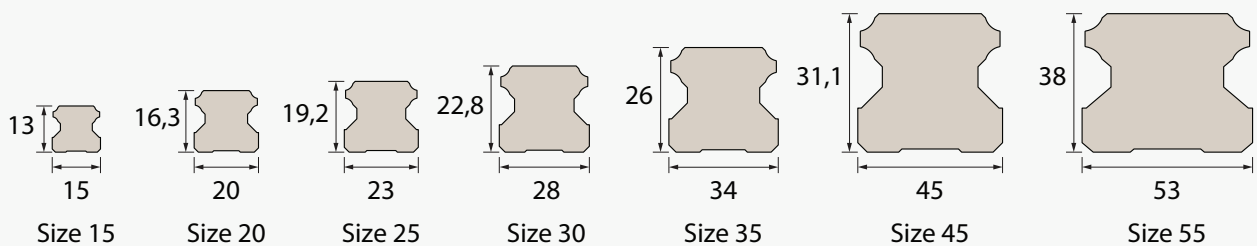
WHY USE THIS PRODUCT

- For their rigidity, precision and high load capacity.
- We stock seven rail profiles of up to 4 metres length with multiple slider options.
- Same day despatch available.
- Cost effective solution compared to other linear guides.
- The system is interchangeable with other manufacturers such as THK, HIWIN, INA, Bosch etc.

LINEAR GUIDES : L1016



RAIL SIZES

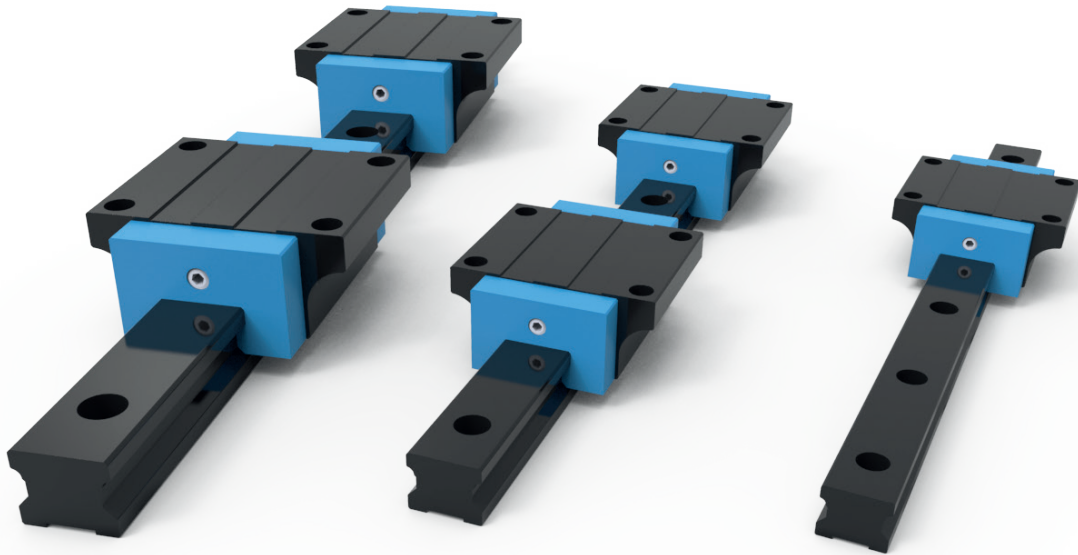


AN OVERVIEW OF BLACK LINEAR GUIDES

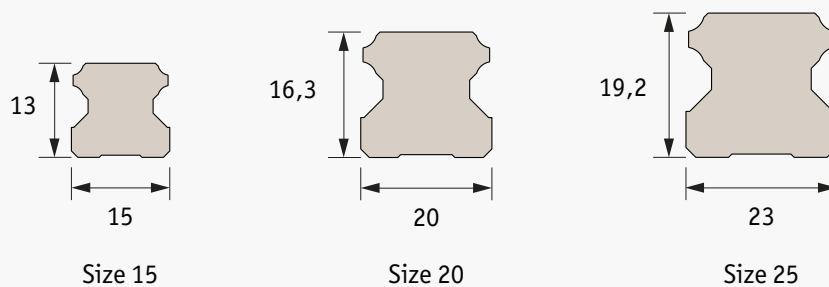
WHY USE THIS PRODUCT

- The black colour version is used for optical machines or aesthetically pleasing applications as the rail blends in with the other component parts on the machine.
- For their rigidity and precision.
- The system is interchangeable with other manufacturers such as THK, HIWIN, INA, Bosch etc.

LINEAR GUIDES : L1016



RAIL SIZES

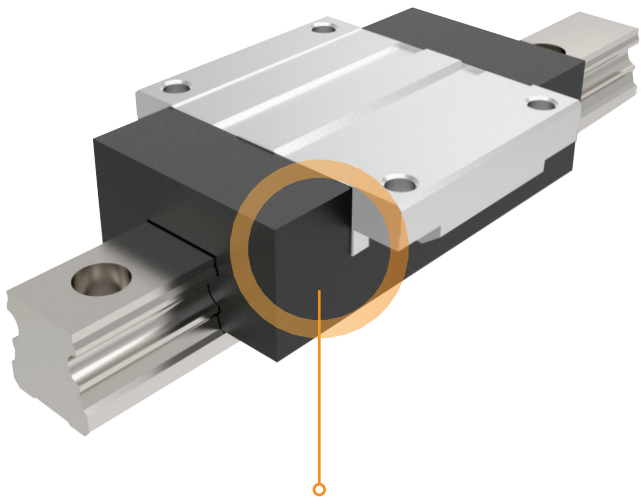


AN OVERVIEW OF ALUMINIUM LINEAR GUIDES

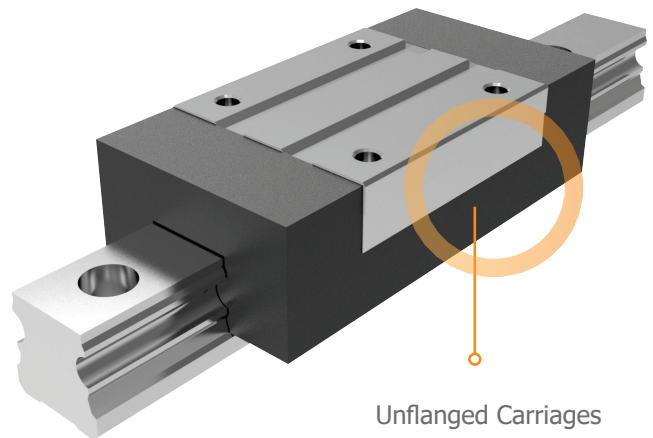
WHY USE THIS PRODUCT

- Compact and lightweight. These weigh approximately 60% less than comparatively sized steel rails.
- Corrosion resistant material. Hardened stainless balls and rail strips to prevent wear.

LINEAR GUIDES : L1018

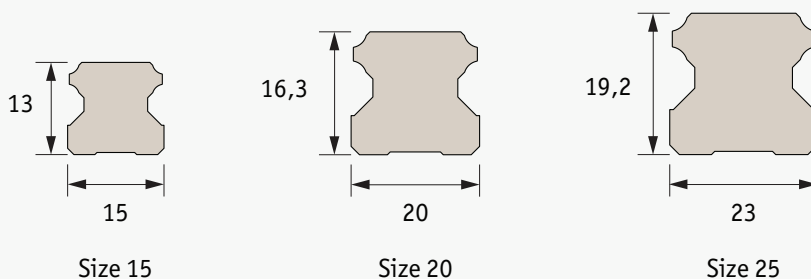


Flanged Carriages



Unflanged Carriages

RAIL SIZES





PRODUCTS ▼



Linear Guideways & Rails >

Linear Rails



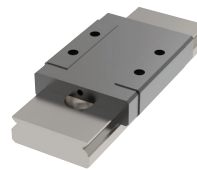
Miniature Linear Rails - L1010

Standard width. 3mm to 15mm. Hardened, corrosion resistant stainless steel.



Miniature Linear Rails - L1012

Wide version. 10mm to 42mm. Hardened, corrosion resistant stainless steel.



Miniature Rail Carriages - L1012.C

Wide version. Corrosion resistant stainless steel body, with hardened stainless steel ball bearings.



Linear Guide Rails - L1016

Standard. 15mm to 55mm. Hardened and ground steel.



Linear Guide Rails - L1016.BL

Standard. Blackened. 15mm to 25mm. Hardened and ground steel. Black oxide.



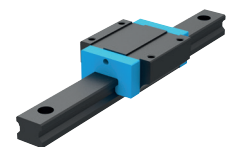
Linear Guide Rails - L1016.BR

Rear fixing. Blackened. 15mm to 25mm. Hardened and ground steel. Black oxide.



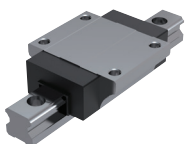
Rail Clamps - L1016.CL

Manual. Aluminium body, steel contact faces. Used in conjunction with the rail carriages, flanged and unflanged.



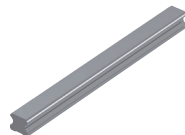
Flanged Carriages - Standard - L1016.F

Blackened. Hardened and ground steel. Matt black oxide ceramic layer. Resistant to acids, alkalis and solvents.



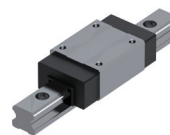
Flanged Carriages - Standard - L1016.F

No ball cage. Hardened and ground steel. Widely used throughout industry in machine building.



Linear Guide Rails - L1016.RF

Rear fixing. 15mm to 45mm. Hardened and ground steel.



Unflanged Carriages - Standard - L1016.U

With retained ball cage. Hardened and ground steel. Ball cages allowing the carriages to be removed from the rail without the balls falling out.



Aluminium Linear Guide Rails - L1018

With stainless raceways for added durability. Lightweight and compact. Used with aluminium carriages.

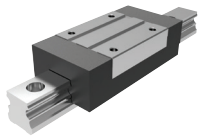


PRODUCTS ▼



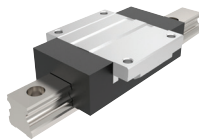
Linear Guideways & Rails >

Linear Rails



Unflanged Aluminium Carriages - L1018.U

With retained ball cage. Compact and lightweight. Used with corresponding aluminium linear rails.

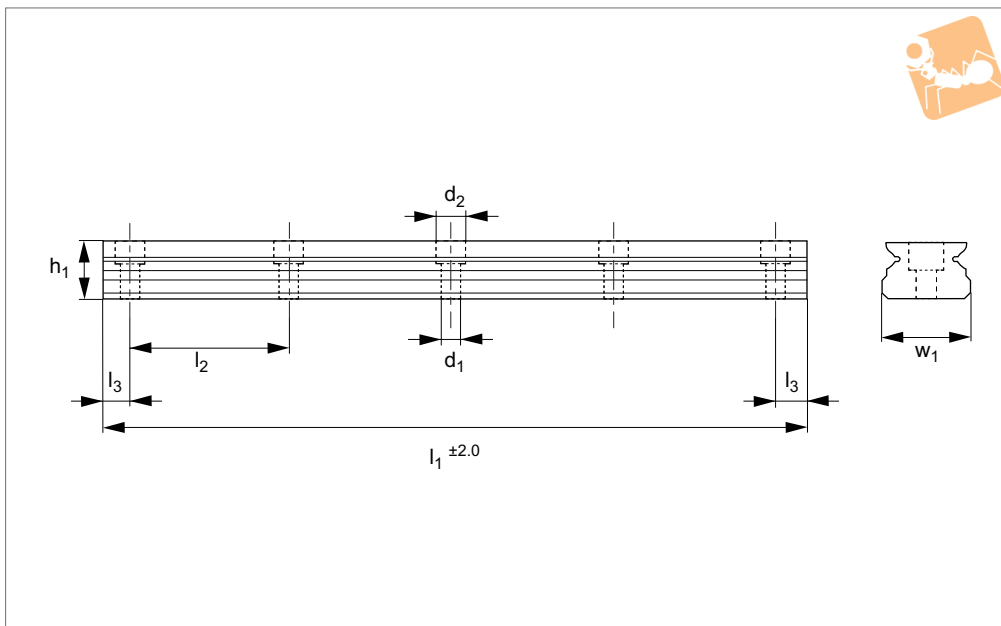


Flanged Aluminium Carriages - L1018.F

With retained ball cage. Compact and lightweight. Used with corresponding aluminium linear rails.



L1010



Material

Corrosion resistant stainless steel, hardened (similar to 440C).

Technical Notes

Supplied with special low profile hex screws.

Select the size and number of carriages to suit the required load (see part L1010.C). Other rail lengths on request.

Important Notes

This size rail has a through thread from underside.

Must be ordered with corresponding sized carriage.

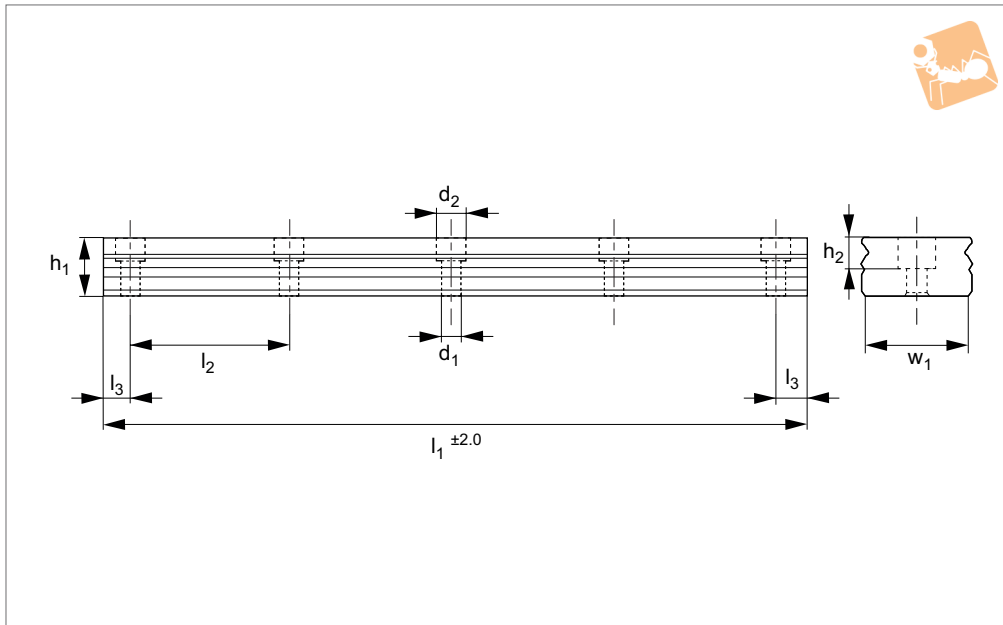
Replace xxxx with desired rail length - eg. L1010.03-1000 is 1000mm long.

Order No.	w ₁	l ₁ max.	l ₂	l ₃	h ₁	h ₂	d ₁	d ₂	For screws
L1010.03-xxxx	3	1000	10	2.5	2.6	-	-	-	M 1.6
L1010.05-xxxx	5	1000	15	5.0	3.5	1.0	2.4	3.5	M 2
L1010.07-xxxx	7	1000	15	5.0	4.7	2.3	2.4	4.2	M 2
L1010.09-xxxx	9	1000	20	7.5	5.5	3.5	3.5	6.0	M 3
L1010.12-xxxx	12	1000	25	10.0	7.5	4.5	3.5	6.0	M 3
L1010.15-xxxx	15	1000	40	15.0	9.5	4.5	3.5	6.0	M 3

Miniature Linear Rail

wide version

Miniature
Linear
Guideways



L1012

LINEAR GUIDEWAYS

Material

Corrosion resistant stainless steel, hardened (similar to 440C).

Technical Notes

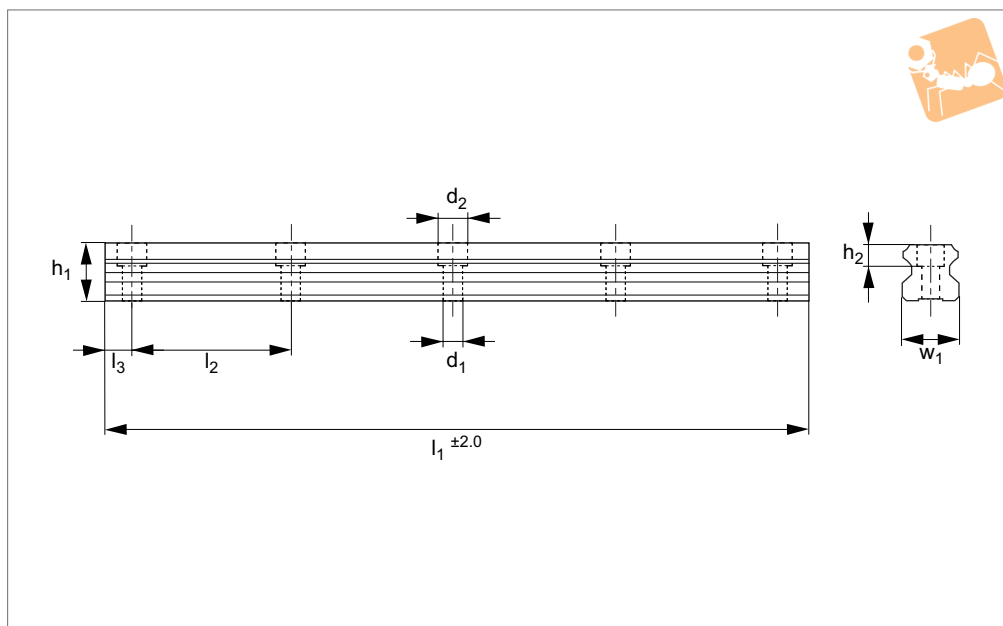
Select the size and number of carriages to suit the required load (see part L1012.C).
Other rail lengths on request.
Weight: 0.3 Kg/m.

Replace xxxx with desired rail length eg. **L1012.10-1000** is 1000mm long.

Order No.	$l_{1 \text{ max}}$	l_2	l_3	h_1	h_2	d_1	d_2	For screws	w_1
L1012.10-xxxx	1000	20	7.5	4.0	1.6	3.0	5.5	M 2.5	10
L1012.14-xxxx	1000	30	10.0	5.2	3.5	3.5	6.0	M 3	14
L1012.18-xxxx	1000	30	10.0	7.3	4.5	3.5	6.0	M 3	18
L1012.24-xxxx	1000	40	15.0	8.5	4.5	4.5	8.0	M 4	24
L1012.42-xxxx	1000	40	15.0	9.5	4.5	4.5	8.0	M 4	42



L1016



Material

Hardened and ground steel (typically 60 HRC).

Technical Notes

For carriages to suit the required load see part nos. L1016.F (flanged) and L1016.U (unflanged).
Other rail lengths on request.

Tips

Plastic screw covers issued with the rails to protect screw holes from debris.

Replace xxxx with desired rail length, eg. L1016.15-1000 is 1000mm long.

Order No.	Rail size	l_1 max.	h_1	l_2	w_1	l_3	h_2	d_1	d_2	For screws
L1016.15-xxxx	15	4000	13.0	60	15	20.0	6.0	4.5	7.5	M 4
L1016.20-xxxx	20	4000	16.3	60	20	20.0	8.5	6.0	9.5	M 5
L1016.25-xxxx	25	4000	19.2	60	23	20.0	9.0	7.0	11.0	M 6
L1016.30-xxxx	30	4000	22.8	80	28	20.0	12.0	9.0	14.0	M 8
L1016.35-xxxx	35	4000	26.0	80	34	20.0	12.0	9.0	14.0	M 8
L1016.45-xxxx	45	4000	31.1	105	45	22.5	17.0	14.0	20.0	M 12
L1016.55-xxxx	55	4000	38.0	120	53	30.0	20.0	16.0	23.0	M 14

COMPACT RAILS

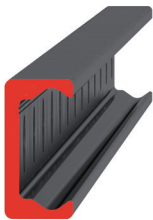
What is a Compact Rail?

The compact rail system is a unique linear rail, or linear guide system that is very easy to install and allows for some misalignment of the structure in which it is being used. With the pre-load, or stiffness of the system also being adjustable by the user during set up, makes this a very user friendly linear system. Induction hardened raceways on all rails and a precision 'master' rail ensure this is still a high precision system but with minimal set up time, thus offer cost savings during the installation process.

VIEW THE FULL RANGE



Automotion
AN ESSENTRA COMPANY



Light Duty T Rails - L1918.18

Light duty, compact rails with counterbored fixing holes. Usually used with a U slave rail to allow for system misalignment.

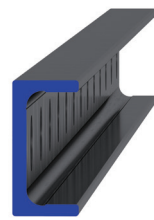
Automotion
AN ESSENTRA COMPANY



Light Duty Sliders - Size 18 - L1918.CS

Light duty, compact rail sliders with rubber seals. No side seal. Front fixing. Easy to install. Quiet and fast. The U rail sliders cannot accept axial loads.

Automotion
AN ESSENTRA COMPANY



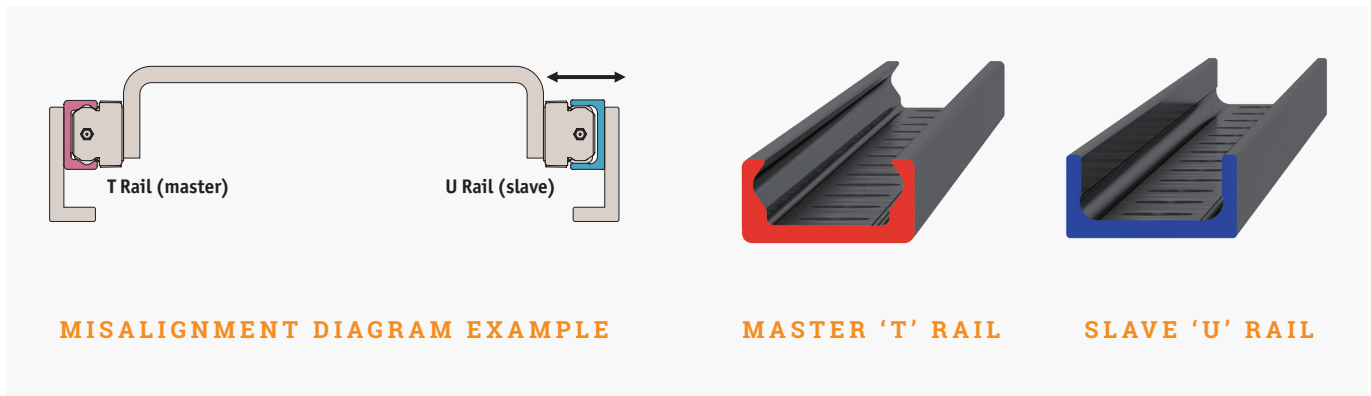
Light Duty U Rails - L1918.18

Light duty, compact U-rails with counterbored fixing holes. Usually used with a T master rail and a corresponding T-C rail.

AN OVERVIEW OF COMPACT RAILS

WHY USE THIS PRODUCT

- Misalignment compensation system. Unique master and slave rails allow the system to operate effectively even when a pair of rails are not perfectly parallel.
- Manually adjustable pre-load.
- Ideal product when mounting surfaces are not precision ground, which is a requirement for standard linear guides.



MISALIGNMENT DIAGRAM EXAMPLE

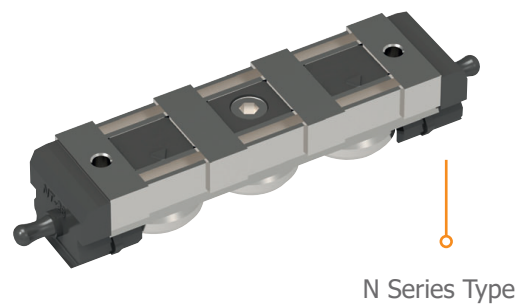
MASTER 'T' RAIL

SLAVE 'U' RAIL

SLIDER OPTIONS

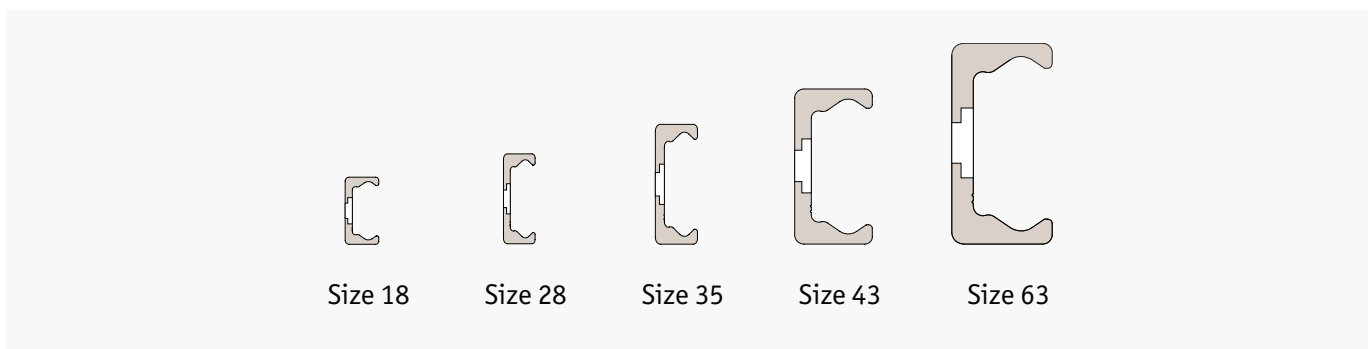


CSW Type



N Series Type

RAIL SIZES





PRODUCTS ▾



Linear Guideways & Rails >

Compact Rails



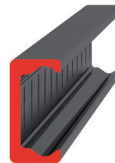
**Light Duty Sliders - Size 18
- L1918.CR**

Light duty compact sliders for long linear rails. Side seal. With wipers. Easy to install. Quiet and fast.



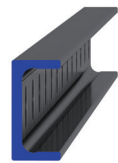
**Light Duty Sliders - Size 18
- L1918.N**

Light duty. Standard. Maintenance free, self-lubricating wipers. Easy to install. Quiet and fast.



**Medium Duty T Rails
- L1928.28**

Medium duty, compact T-rails with counterbore holes. Usually used with a U-C slave rail.



**Medium Duty U Rails
- L1928.28**

Medium duty compact U-rails with countersunk holes. Usually used with a corresponding T-V rail.



Medium Duty Sliders - Size 28 - L1928.CS

Medium duty, compact rail sliders. Front fixing with no side seal, size 28. With wiper. Easy to install. Quiet and fast.



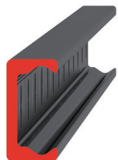
Medium Duty Sliders - Size 28 - L1928.CR

Medium duty compact rail sliders. Top fixing with side seal, size 28. Easy to install. Quiet and fast.



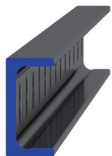
Medium Duty Sliders - Size 28 - L1928.N

Medium duty compact rail sliders. Top fixing, size 28. Cast body. Maintenance free, self-lubricating wipers. Easy to install.



**Medium Duty T Rails
- L1935.35**

Medium duty compact T-rails with counterbored holes. Usually used with a U slave rail.



**Medium Duty U Rails
- L1935.35**

Medium duty compact U-rails with countersunk holes. Usually used with corresponding T-V rail.



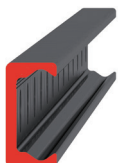
Medium Duty Sliders - Size 35 - L1935.CS

Medium duty compact rail sliders. Front fixing, size 35 without side seal. Cannot accept axial loads. Easy to install. Quiet and fast.



Medium Duty Sliders - Size 35 - L1935.CR

Medium duty compact rail sliders. Top fixing, size 35 with side seal.



**Heavy Duty T Rails
- L1943.43**

Heavy duty compact T-rails with counterbored holes. Usually used with a corresponding U-C rail.

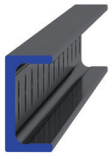


PRODUCTS ▾



Linear Guideways & Rails >

Compact Rails



Heavy Duty U Rails - L1943.43

Heavy duty compact U-rails with countersunk holes. Usually used with a corresponding T-V rail.



Heavy Duty Sliders - Size 43 - L1943.CS

Heavy duty compact rail sliders. Front fixing, size 43 with no side seal. With wipers. Cannot accept axial loads.



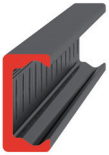
Heavy Duty Sliders - Size 43 - L1943.CR

Heavy duty compact rail sliders. Top fixing, size 43 with side seal.



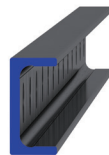
Heavy Duty Sliders - Size 43 - L1943.N

Heavy duty compact rail. Top fixing, size 43. Cast body. Maintenance free, self-lubricating wipers.



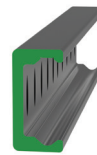
Very Heavy Duty T Rails - L1963.63

Very heavy duty compact T-rails with countersunk holes. Used with a corresponding ULC rail.



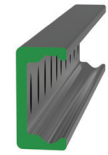
Very Heavy Duty U Rails - L1963.63

Very heavy duty compact U-rails with countersunk holes. Usually used with a corresponding TLV rail.



Very Heavy Duty K Rails - L1963.63

Very heavy duty compact K-rails with countersunk holes. Not suited for vertical applications.



Very Heavy Duty K Rails - L1963.63

Very heavy duty compact K-rails with countersunk holes. Not suited for vertical applications.



Very Heavy Sliders - Size 63 - L1963.CS

Very heavy duty rail sliders. Front fixing, size 63 with no side seal. With wipers. Easy to install. Quiet and fast.



Very Heavy Duty Sliders - Size 63 - L1963.N

Very heavy duty compact slider. Top fixing, size 63. Standard. Cast body. Maintenance free, self-lubricating wipers.



Low Profile Screws - L1900.S

Special low head torx screws for compact rails. Zinc or nickel plated.



Slider Clamps - L1900.CL

Manual slider clamps for use with our compact rail systems. Aluminium clamp body with steel clamping face.



PRODUCTS ▼



Linear Guideways & Rails >

Compact Rails



 Automotion
AN ESSENTRA COMPANY



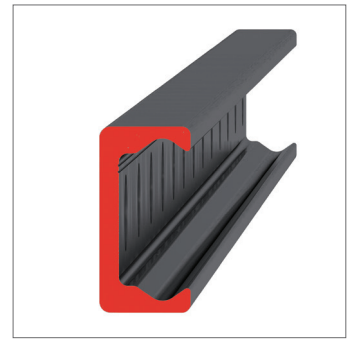
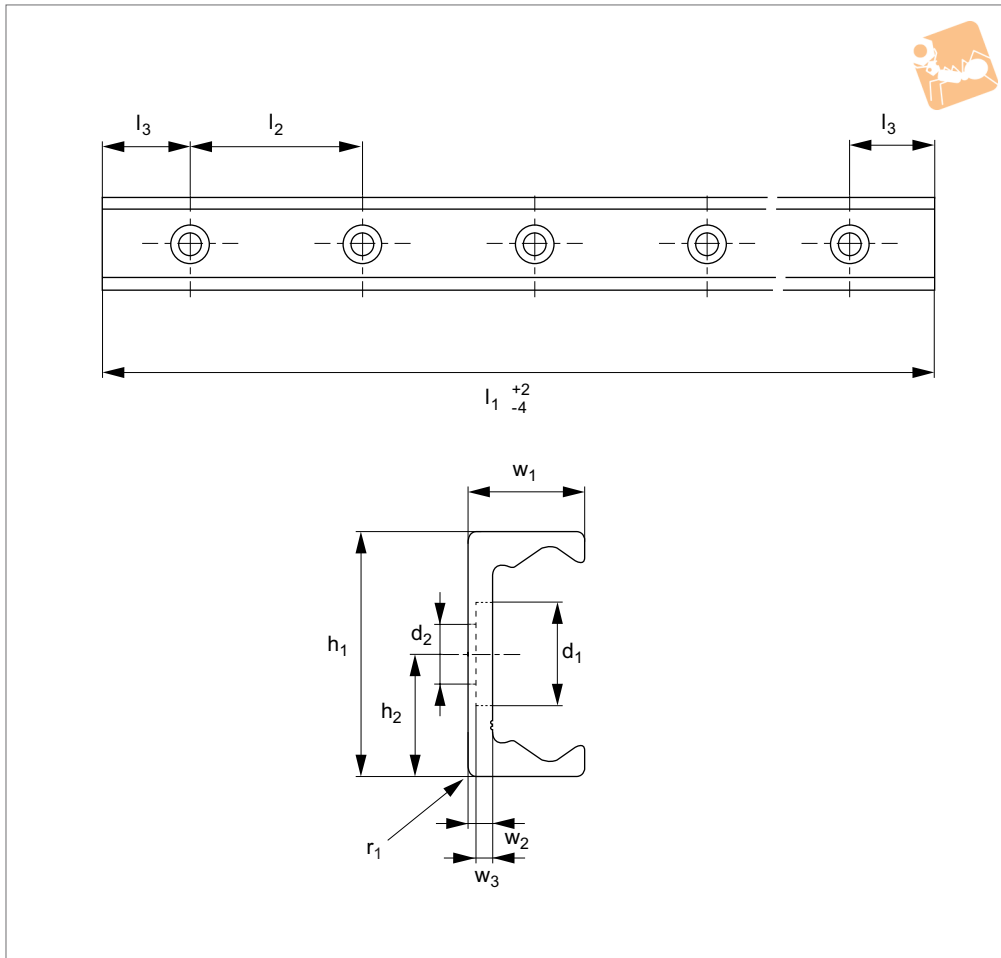
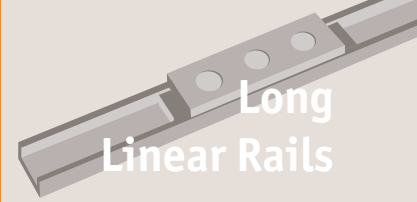
Individual Rollers - L1900.CP

Lubricated for life. Individual rollers for use with our compact rail system products.



Light Duty T Rail

counterbored holes



L1918
L1928
L1943

LINEAR

Material

Carbon steel. Raceways induction hardened and ground. Electrolytic zinc-plated (excluding raceways).

Technical Notes

The T rail is a master rail and is usually used with a U slave rail (allows for system

misalignment).

This is the counterbored rail type (most popular), which is usually used with a corresponding ULC rail. Special low profile Torx head screws provided free of charge. Weight: 0.55 Kg/m.

Tips

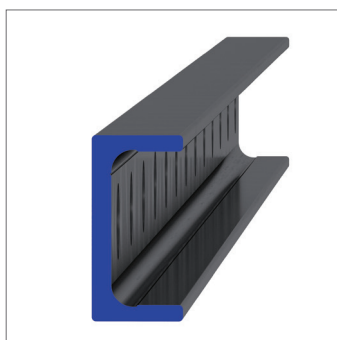
Standard carriages are the L1918.N versions (die cast aluminium alloy with wipers). Alternatively the L1918.C type is also available (without wipers).

Replace xxxx with desired rail length. E.g L1918.TLC18-1000 is 1000mm long.

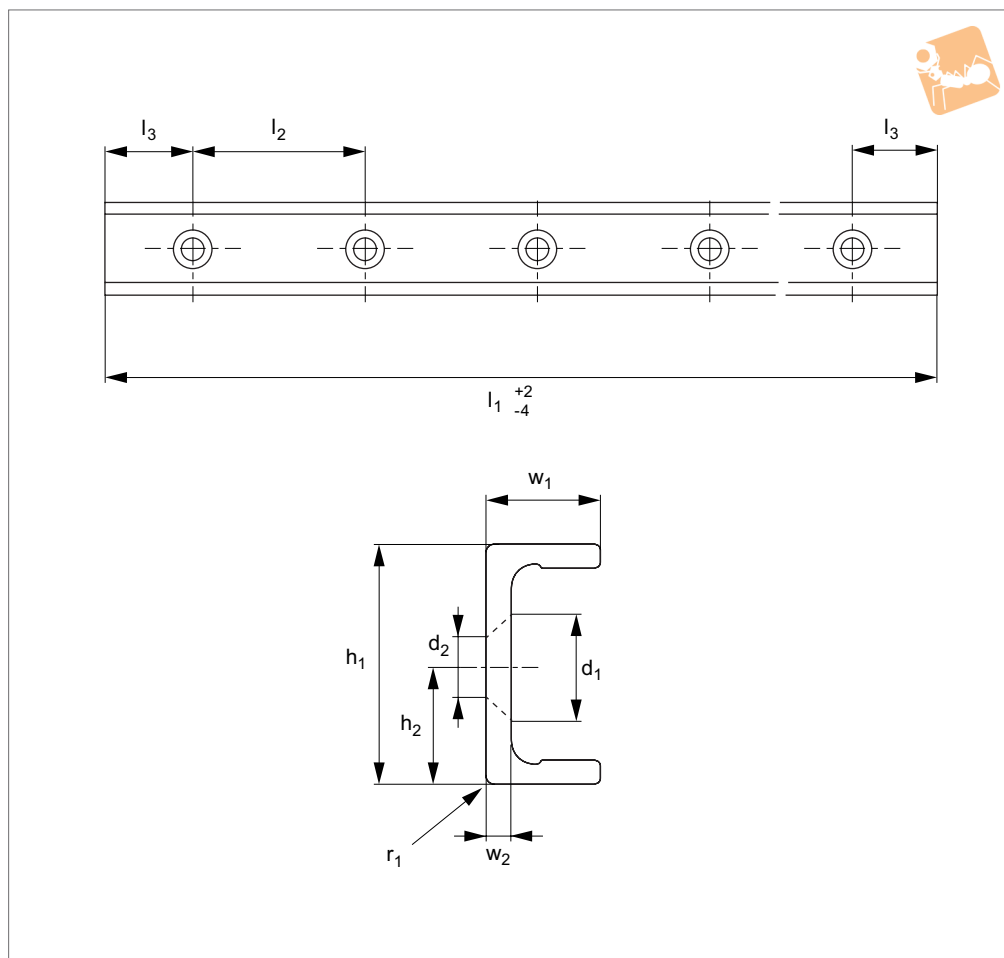
Order No.	d_1	d_2 for screws	h_1	h_2	l_1 max	l_2	l_3	r	w_1	w_2	w_3
L1918.TLC18-xxxx	9.5	M 4	18	9.0	2000	80	40	1.5	8.25	2.8	2.0
L1928.TLC28-xxxx	11.0	M 5	28	14.0	3200	80	40	1.0	12.3	3.0	2.0
L1943.TLC43-xxxx	18.0	M 8	43	21.5	4080	80	40	2.5	21.0	4.5	3.1



LINEAR



L1918
L1928
L1943



Material

Carbon steel. Raceways induction hardened and ground.
Electrolytic zinc-plated (excluding raceways).

Technical Notes

The U rail is a slave rail and is usually used

with a T master rail.

This is the ULV countersunk rail type which is usually used with a corresponding TLV rail.

For fixing use countersunk DIN 7991 screws.

Weight: 0.55 Kg/m.

Tips

Standard carriages are the L1918.N versions (die cast aluminium alloy with wipers). Alternatively the L1918.C type is also available (without wipers).

Replace xxxx with desired rail length. E.g L1918.ULV18-1040 is 1040mm long.

Order No.	d ₂	h ₁	h ₂	l ₁ max	l ₂	l ₃	r ₁	w ₁	w ₂
L1918.ULV18-xxxx	M 4	18	9.0	2000	80	40	1	8.25	2.6
L1928.ULV28-xxxx	M 5	28	14.0	3200	80	40	1	12.00	3.0
L1943.ULV43-xxxx	M 8	43	21.5	4080	80	40	1	21.00	4.5

X RAILS

What is an X Rail?

X rails are highly cost-effective systems for linear motion and are excellent for applications such as drawers, protective screens, battery casings etc. They come with a rolled-formed steel section, accommodating structural misalignment and providing durability for diverse applications. Available in zinc-plated steel but also available in stainless steel for added corrosion resistance, suitable for outside and marine environments.



VIEW THE FULL RANGE



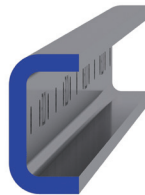
Automotion
AN ESSENTRA COMPANY



Steel X Rails - T Rails (master) - L1970.T

The X rail system is a cold rolled rail system offering an economical solution to simple linear movement applications. Low-profile and very effective.

Automotion
AN ESSENTRA COMPANY



Steel X Rails - U Rails (slave) - L1970.U

The X rail system is a cold rolled rail system offering an economical solution to simple linear movement applications. Low-profile and very effective.

Automotion
AN ESSENTRA COMPANY



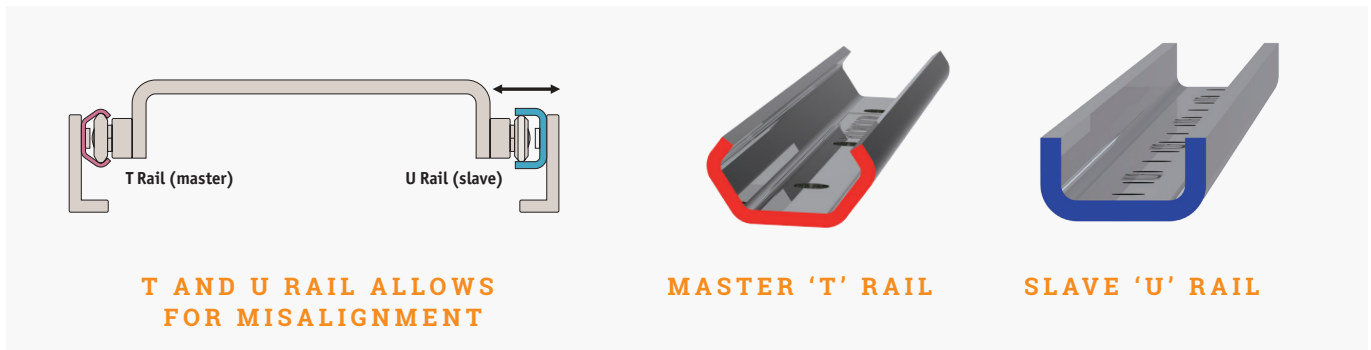
Low Profile Stainless Sliders - L1971.LP

For T rail (master). The X rail system is a cold rolled rail system offering an economical solution to simple linear movement applications. Low-profile and very effective.

AN OVERVIEW OF X RAILS

WHY USE THIS PRODUCT

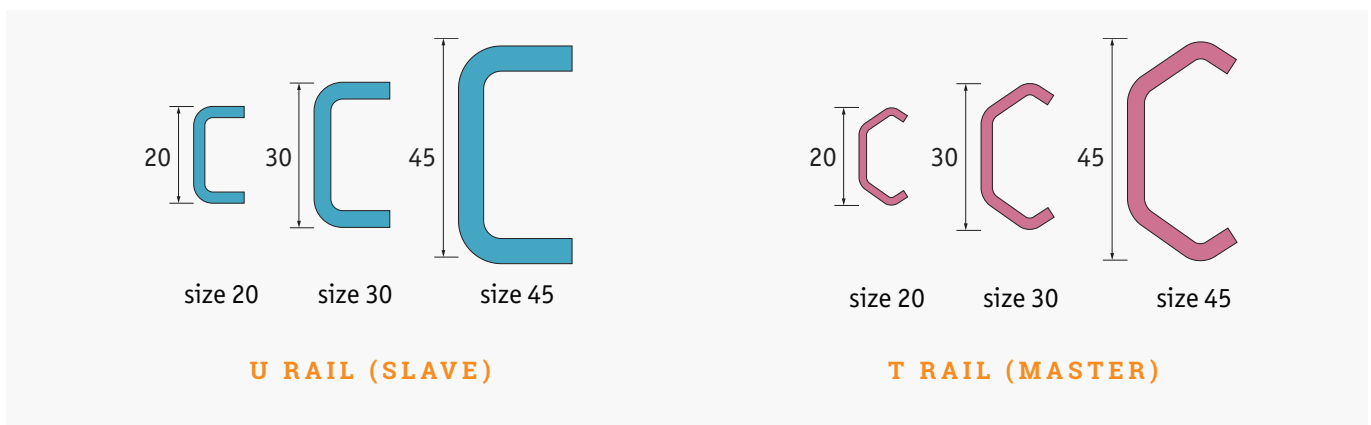
- Cost effective, low precision solution.
- Misalignment compensation system.
- Manually adjustable pre-load.
- Zinc steel or AISI 316 Stainless Steel. Ideal for marine, food or outside applications.
- Same day despatch available.



AISI 316 STAINLESS VERSION



RAIL SIZES



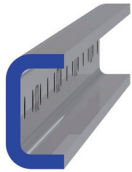


PRODUCTS ▾



Linear Guideways & Rails >

X Rails



Stainless X Rails - L1971.U

U rail (slave). X rails for light duty loads. Corrosion resistant.



Low Profile Steel Sliders - L1970.LP

For T rail (master). Rollers with metal seals. The punched dot mark, indicates the orientation for the loading of the fixed rollers.



Solid Body Steel Sliders - L1970.SB

For T (master) and U (slave) rails. Sliders in U rails cannot accept axial loads.



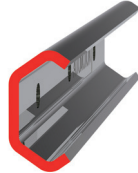
Steel Replacement Rollers - L1970.CR

For T version steel X rails and U version steel X rails.



Fixing Screws - L1970.S

For steel X rails. Strength class 10.9. Hex. socket oval head and Torx screws.



Stainless X Rails - L1971.T

T rail (master). For light duty loads, select number of carriages to suit. Corrosion resistant.



Solid Body Stainless Sliders - L1971.SB

For T rails (master) and U rails (slave). The "V" marks on the slider body indicate the orientation for the loading of the fixed rollers.



Stainless Replacement Rollers - L1971.CR

For T version stainless X rails and U version stainless X rails. With water resistant rubber seals.



Fixing Screws - L1971.S

For stainless steel X rails.

CURVED RAILS

What is a Curved Rail?

Curved rails are unique linear guides that offer a solution for applications where the equipment requires movement along curves, corners, or circular paths. With a minimum radius of 120mm, these rails can be precisely machined into full circles, fractional arcs, straight sections with bends in, or customised shapes according to specific requirements.

VIEW THE FULL RANGE



 Automotion
AN ESSENTRA COMPANY



Curviline Sliders - L1978.CR

Where moment loads are present, use two or more sliders. With lubricated for life roller pins. All stainless steel available.

 Automotion
AN ESSENTRA COMPANY



Variable Radius Rails - L1978.VR

Not to be used in high-cycle applications. Advise angle required and fixing option type.

 Automotion
AN ESSENTRA COMPANY



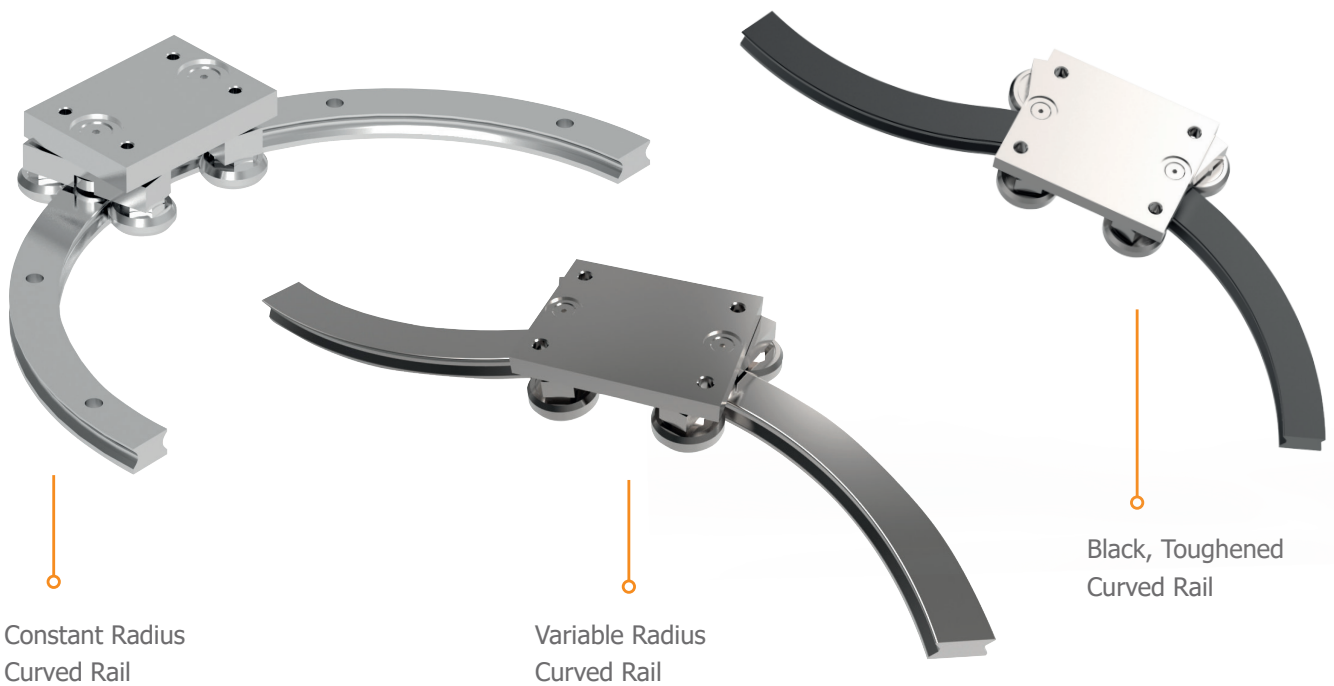
Constant Radius Rails - L1978.CR

Not to be used in high-cycle applications. Advise angle required and fixing option type. All stainless steel on request.

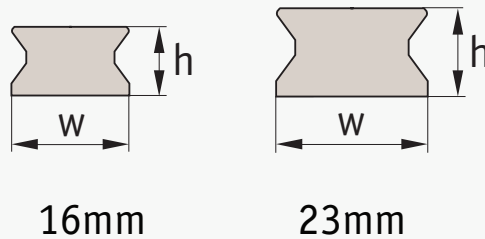
AN OVERVIEW OF CURVED RAILS

WHY USE THIS PRODUCT

- In any application where a bend or curve is required in the linear guide such as a door, sliding table or oval track.
- Manufactured to your specifications.
- Can also be manufactured in aluminium and stainless steel.



RAIL SIZES



AN INTRODUCTION TO CURVILINE RAILS

The Curviline rail system offers a cost-effective solution to curvilinear applications.

FLEXIBILITY WHEN YOU NEED IT

Constant radius, variable radius are available in standard radii, non-standard radii to your drawings are also possible. Straight and curved sections in a single length can be supplied.

Any radius

- From 120mm radius upwards.
- Standard and special radii.
- Angles up to 360°.

Anti-corrosion

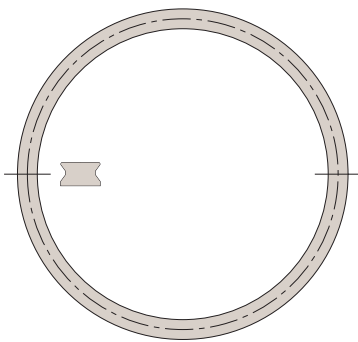
Alloy coating or nickel plating of the rails and sliders can be applied to provide a corrosion resistant solution.



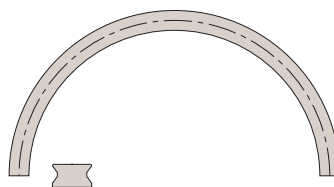
Two profiles

- Small and medium rail profiles.
- Add carriages to suit load.

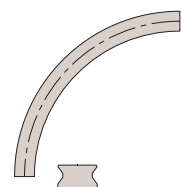
EXAMPLES



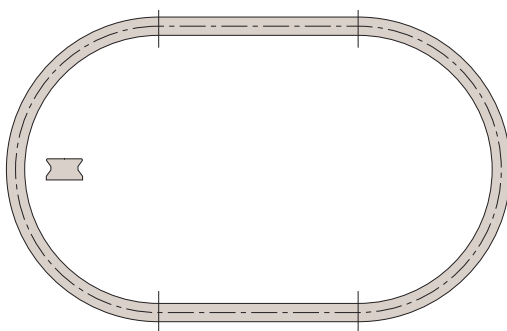
Circle



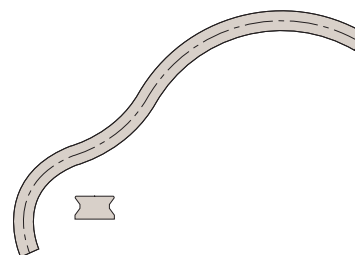
Semi-circle



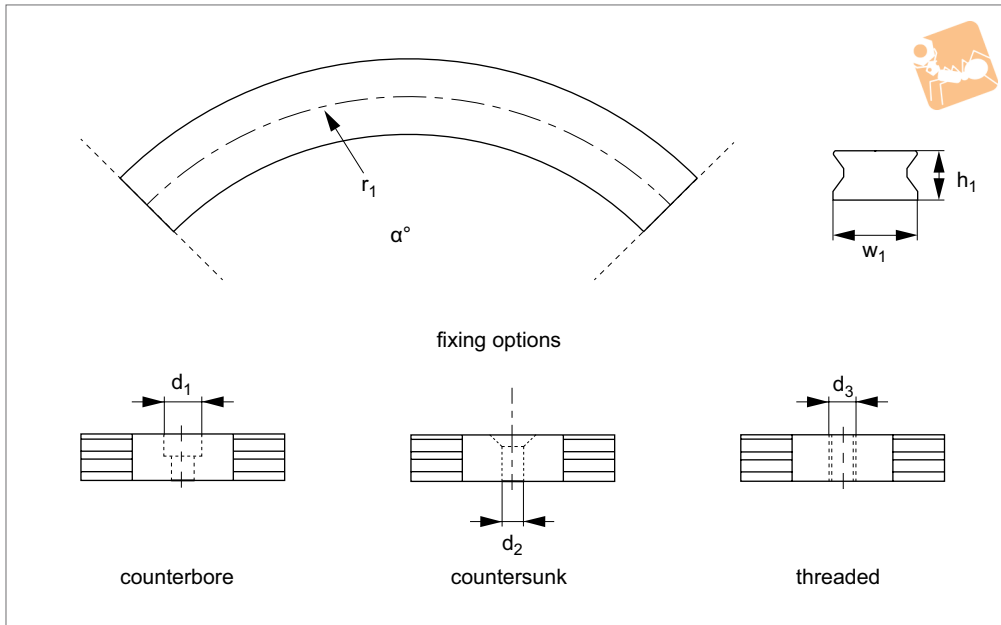
Arcs



Ovals



Complex rails with varied radii and angles



L1978

LINEAR

Material

Steel rail (C43), electrolytic zinc plated.
All stainless steel on request.

Technical Notes

Standard radii are shown below but any radius (from $r_1 > 120$ mm) can be produced.
Advise angle required and fixing option

type.

Temperature range -30°C to $+80^{\circ}\text{C}$.
Rail weight 1,2 Kg/m.

Tips

Combine with curviline sliders L1978.CX16-070.
Recommended hole pitch on rail is 80mm.

Rail tolerance $\pm 0,5\text{mm}$, angle tolerance $\pm 1^{\circ}$.

Recommended rail hole is counterbored (easy to install).

Important Notes

Not to be used in high-cycle applications.

Order No.	w_1	h_1	r_1	α	d_1 for	d_2 for	d_3 for
L1978.CRX16-0150-xx	16.5	10.0	150	tba	M 5	M 5	M 6
L1978.CRX16-0200-xx	16.5	10.0	200	tba	M 5	M 5	M 6
L1978.CRX16-0250-xx	16.5	10.0	250	tba	M 5	M 5	M 6
L1978.CRX16-0300-xx	16.5	10.0	300	tba	M 5	M 5	M 6
L1978.CRX16-0400-xx	16.5	10.0	400	tba	M 5	M 5	M 6
L1978.CRX16-0500-xx	16.5	10.0	500	tba	M 5	M 5	M 6
L1978.CRX16-0600-xx	16.5	10.0	600	tba	M 5	M 5	M 6
L1978.CRX16-0700-xx	16.5	10.0	700	tba	M 5	M 5	M 6
L1978.CRX16-0800-xx	16.5	10.0	800	tba	M 5	M 5	M 6
L1978.CRX16-0900-xx	16.5	10.0	900	tba	M 5	M 5	M 6
L1978.CRX16-1000-xx	16.5	10.0	1000	tba	M 5	M 5	M 6
L1978.CRX23-0150-xx	23.0	13.5	150	tba	M 6	M 6	M 8
L1978.CRX23-0200-xx	23.0	13.5	200	tba	M 6	M 6	M 8
L1978.CRX23-0250-xx	23.0	13.5	250	tba	M 6	M 6	M 8
L1978.CRX23-0300-xx	23.0	13.5	300	tba	M 6	M 6	M 8
L1978.CRX23-0400-xx	23.0	13.5	400	tba	M 6	M 6	M 8
L1978.CRX23-0500-xx	23.0	13.5	500	tba	M 6	M 6	M 8
L1978.CRX23-0600-xx	23.0	13.5	600	tba	M 6	M 6	M 8
L1978.CRX23-0700-xx	23.0	13.5	700	tba	M 6	M 6	M 8
L1978.CRX23-0800-xx	23.0	13.5	800	tba	M 6	M 6	M 8
L1978.CRX23-0900-xx	23.0	13.5	900	tba	M 6	M 6	M 8
L1978.CRX23-1000-xx	23.0	13.5	1000	tba	M 6	M 6	M 8

LEAD SCREWS

What is a Lead Screw?

Lead screws are fundamental in translating rotary motion to linear movement and are commonly used in conjunction with parallel linear guides. Lead screws are typically used in applications where movements required are at low speed or with low accuracy and they can be quieter and better in vertical running applications compared with ball screws. They also perform at their best in corrosive or dirty environments where dust and debris is around.

VIEW THE FULL RANGE



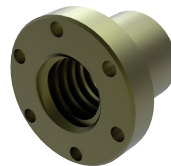
Automotion
AN ESSENTRA COMPANY



Steel Lead Screws - L1320

Rolled trapezoidal C45 steel lead screws, right hand thread. Lengths of up to 6 metres can be provided. Tr 10 to Tr 120.

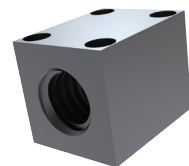
Automotion
AN ESSENTRA COMPANY



Flanged Bronze Nuts - L1331

Flanged bronze lead screw nuts - for trapezoidal threads. For manual or powered applications at medium/low rotation speeds under load.

Automotion
AN ESSENTRA COMPANY



Square Steel Nut with Holes - L1337

Square steel nut with holes for right handed thread screws. Useful for fixing additional elements onto the lead screw carriage.

AN OVERVIEW OF OUR STANDARD PARTS IN THIS RANGE

LEAD SCREWS

Automation Components offers a large range of trapezoidal lead screws, typically held in stock in large volumes. Machining or custom lead screws regularly manufactured to customer drawing.

L1320 STEEL LEAD SCREWS - RIGHT HAND THREAD



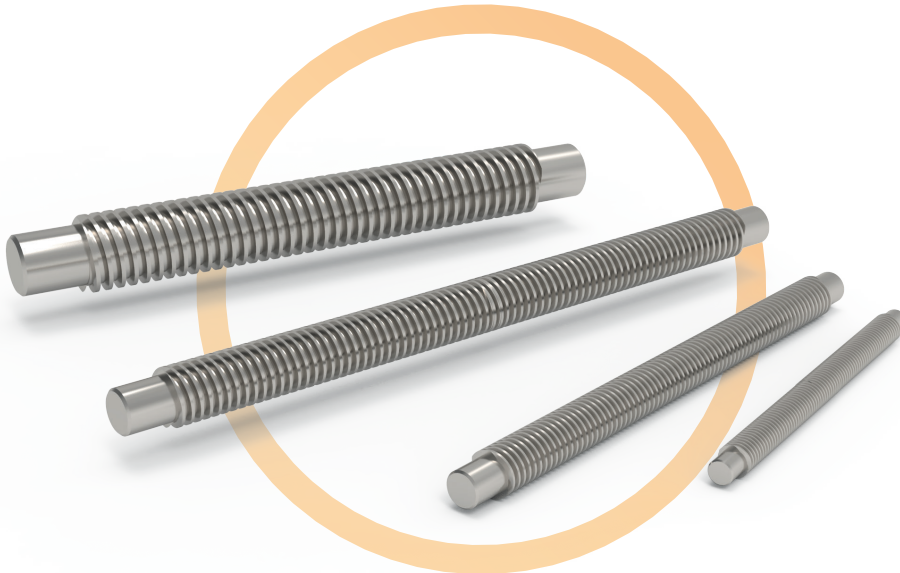
Steel C45 Trapezoidal lead screws from Tr10x2 up to Tr120x16. Standard lengths up to 3 metres with specials available up to 6 metres.

L1322 STAINLESS LEAD SCREWS - RIGHT HAND THREAD



AISI 316 stainless steel Trapezoidal lead screws from Tr10x2 up to Tr70x10. Standard lengths up to 3 metres with specials available up to 6 metres.

MACHINED LEAD SCREW



We can machine the ends of lead screws to customer drawings on request. We also manufacture special lead screws to drawing.

L1321 STEEL LEAD SCREWS - LEFT HAND THREAD



Left Hand thread steel C45 trapezoidal lead screws from Tr10x2 up to Tr120x16. Standard lengths up to 3 metres. Also available in AISI 316 stainless, part number L1323.

L1350 FLANGED HIGH HELIX LEAD SCREW NUTS



Precision high helix lead screws available in diameters from 4x1 up to 20x10. The ideal product when more accuracy is required that trapezoidal lead screws cannot offer, but the application doesn't warrant the cost of a ball screw.



PRODUCTS ▾



Lead Screws & Ball Screws >

Lead Screws



Steel Lead Screws - L1321

Rolled trapezoidal C45 steel lead screws, left hand thread. Lengths of up to 6 metres can be provided. Tr10 to Tr 120.



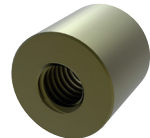
Stainless Lead Screws - L1322

Rolled trapezoidal AISI 316 grade (A4) stainless lead screws, right hand thread. Surface hardness 280HB. Lengths of up to 6 metres. Tr 10 to Tr 120.



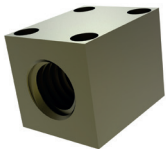
Stainless Lead Screws - L1323

Rolled trapezoidal AISI 316 grade (A4) stainless steel lead screws, left hand thread. Lengths of up to 6 metres can be provided.



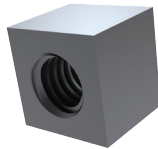
Cylindrical Bronze Nuts - L1330

Cylindrical bronze lead screw nuts - for trapezoidal threads. For manual or powered applications at low and medium rotation and under loads.



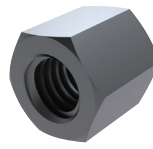
Square Bronze Nut with Through Holes - L1334

Square bronze lead screws nuts - for trapezoidal threads. Suitable for movements with medium duty loads.



Square Steel Nuts - L1336

Steel square nuts for lead screws. Standard nuts are right hand thread, single starts.



Hexagon Steel Nuts - L1338

Steel hexagonal lead screw nuts - for trapezoidal threads. For low rotation speeds, manual control, locking functions or receiving dead weights.



Cylindrical Steel Nuts - L1339

Steel cylindrical lead screw nuts - for trapezoidal threads. For low rotation speeds, manual control, locking functions or receiving dead weights.



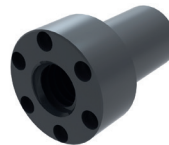
Long Cylindrical Steel Nuts - L1340

To ISO 2901/2903 (DIN 103). Used for clamping and locking applications, and for slow rotational speeds with manual control.



Cylindrical Stainless Steel Nuts - L1341

Stainless steel lead screw nuts for trapezoidal thread. Stainless steel offers excellent corrosion resistance.



Flanged Self-Lubricating Plastic Nut - L1342

Plastic, flanged lead screw nuts with long thread to reduce wear and enhance service lifetime.

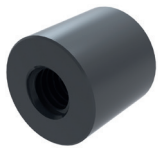


PRODUCTS ▾



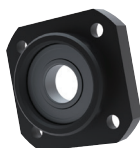
Lead Screws & Ball Screws >

Lead Screws



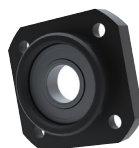
Cylindrical Nylon Nuts - L1343

Can be used without lubrication for manual or powered control and medium/high speeds under moderate loads. Low noise.



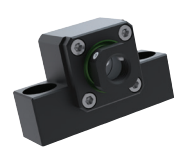
Fixed Round Support Units (FK) - L1390

Steel with black oxide finish. Nickel plated versions for cleanroom applications can be produced on request.



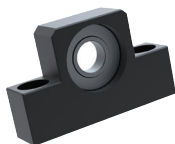
Floating Round Support Units (FF) - L1391

Floating round supports for ball and lead screws. Bearings are sealed and lubricated for life.



Fixed Rectangular Support Units (EK) - L1394

These fixed support units are for the driven end of the lead screw. This unit can easily be bolted down.



Floating Rectangular Support Units (EF) - L1395

Floating support units for the non-driven end of the lead screw. Bearings are sealed and lubricated for life.



Fixed Rectangular Support Units (AK) - L1388

Fixed support units for the driven end of the lead screw. Please note that we can machine the ends of your lead screw to your requirements.



Floating Rectangular Support Units (AF) - L1389

Floating support units for the non-driven end of the lead screw. Having one fixed and one floating support unit means your lead screw will not seize up.



Disk Type Handwheels - L1458

Aluminium disc handwheels with duroplast handles. Rim turned and polished. Ideal for use with our lead screws.



Position Counters - L1470

Four digit read out position counter, with red indicator for decimals. Clockwise (-C) and anti-clockwise (-A) versions available.



Anti-backlash High Helix Lead Screws - L1351

Anodized aluminium or 416 stainless steel screw with round acetal resin nut. High precision. Nut fitted to screw to ensure anti-backlash.



Flanged High Helix Lead Screw Nuts - L1350

Resin nut (PPS), to suit lead screw L1349. High precision. Tight axial clearance.

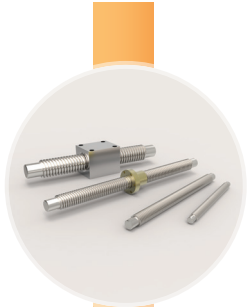


High Helix Lead Screws - Stainless - L1349

Stainless SUS 304, high helix lead screw. High precision. See L1350 for corresponding nut.

AN INTRODUCTION TO LEAD AND BALL SCREWS

At **Automotion Components**, we are very proud of the vast range of products we are able to offer, which includes our range of **Lead & Ball Screws**.



LEAD SCREWS & PRECISION SCREWS

Our commercial and precision are available in steel and 316L stainless. The commercial range has trapezoidal threads in single and twin start. The precision range provides a more accurate fit and higher "leads" - is distance travelled per revolution, offering good solutions to your application needs. The lead screw nuts are provided in brass, steel, plastic resin and stainless steel.

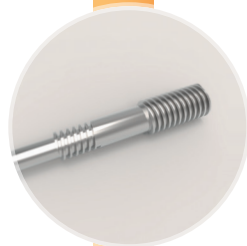
Thread sizes are from Ø8 with a 1mm lead up to Ø120 with a 18mm lead.

Thread types - right hand is of course standard but we offer left hand as well as "combi" lead screws (right hand thread one end and left hand on the other).

PRECISION LEAD SCREWS

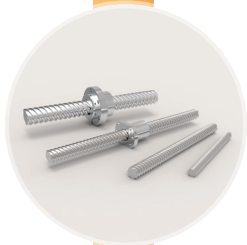
Available in smaller diameters (down to 4mm) and up to 20mm with 40mm lead.

We also provide a range of nuts and bearing supports to complement all sizes of lead and ball screws.



END MACHINING

We can also machine the ends of our lead screws to your requirements or particularly to suit our range of fixed and floating lead screw support units.



BALL SCREWS

We offer highly accurate and reliable ball screws with left and right hand threads. Miniature ball screws from 6 to Ø14mm with cylindrical or flanged nuts. Standard ball screws from 12 to Ø80mm along with a range of anti-corrosion ball screws.



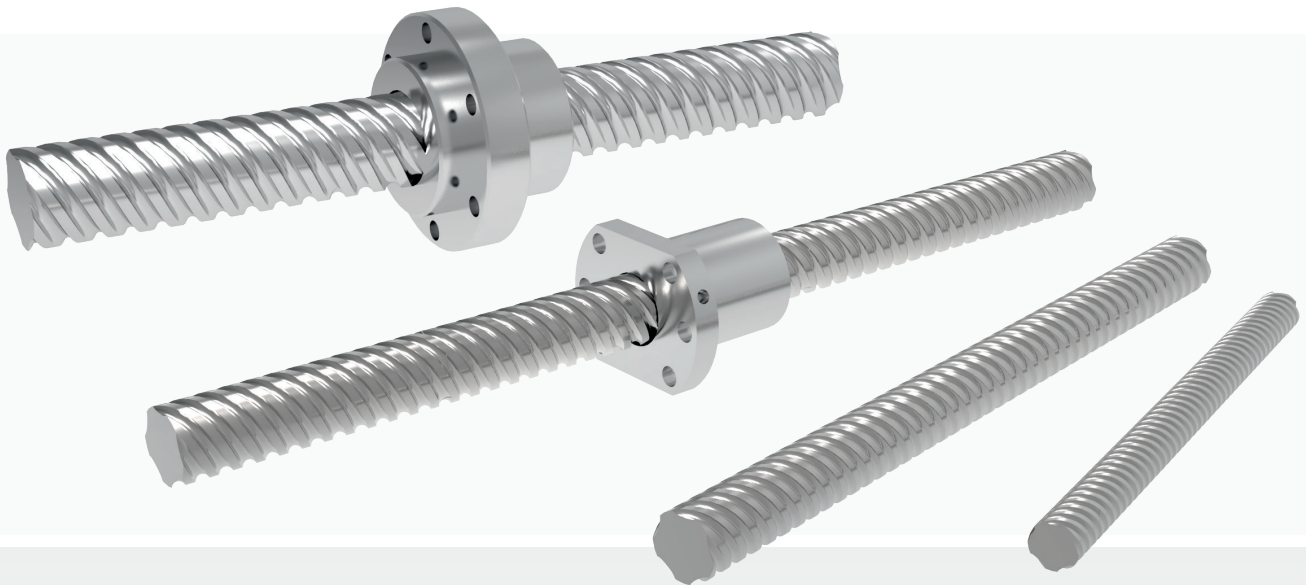


ACCESSORIES

All of the above are supported by a range of accessories including ball screw support units, motor brackets, spindle locks, position counters and handwheels.

BALL SCREWS

What is a Ball Screw?

A ball screw is a screw which translates rotary motion into linear motion. Normally used as the driving mechanism in horizontal or vertically driven applications aided by linear guides for supports. They are described by diameter and pitch or lead. The pitch or lead is the amount of travel you get, or distance the nuts travel along the screw for every complete revolution. They can be operated manually or motorised. They differ from lead screws in that they offer greater precision, speeds, efficiency and accuracy. They are a precision screw which cost considerably more than a lead screw of comparable size so it is important to determine if your application really requires a ball screw.



Ball Screws - L1375

Ball screws are highly efficient due to the recirculating ball mechanism which helps the ball nuts minimise friction against the ball screw. From 16 to 80mm diameter, a range of leads - stocked lengths up to 3 metres.




Flanged Ball Nuts - L1370

To DIN 69051 form B.
To compliment our rolled ball screw range.
With lubrication and fixing holes.

Flanged Ball Nuts - Anti Corrosion - L1377

DIN 69051 form B. Anti corrosion finish consists of a thin layer of black chrome and produces good resistance to wear, and a protective effect against corrosion. Layer thickness 2-10µm.

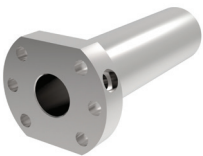


PRODUCTS ▼



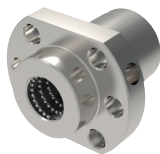
Lead Screws & Ball Screws >

Ball Screws



Flanged Double Ball Nuts - L1371

Can be used with ball screw nut brackets to make mounting carriages etc easier. With lubrication and fixing holes.



Centre Flanged Ball Nuts - L1372

Produced to DIN 69051 form B. With lubrication and fixing holes. Can be used with ball screw nut brackets to make mounting carriages etc easier.



Cylindrical Ball Nuts - L1373

Compatible with our wide range of ball screws with diameters 16-40 mm. With lubrication and fixing holes.



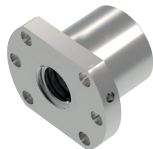
Cylindrical Ball Nuts - L1374

With thread. Compatible with our wide range of ball screws with diameters 16-40 mm. With lubrication and fixing holes.



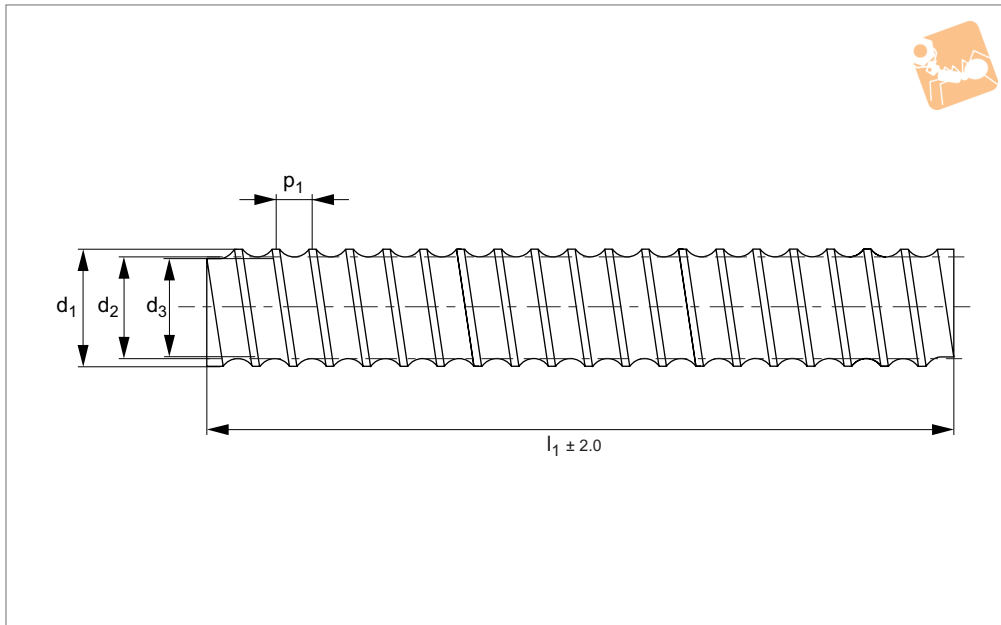
Miniature Rolled Ball Screws - L1379

Miniature rolled ball screws and nuts come in 6-14 mm diameter sizes and with lengths up to 1 metre.



Miniature Flanged Ball Nuts - L1379.F

For use with miniature ball screws. Fit the ball nut screw with the sleeve provided.



L1375

BALL SCREWS

Material

Steel (CF53 or C55R), induction hardened to 60 HRC ± 2 , polished.

Technical Notes

Gothic profile with a 5 or 10mm lead. Tolerance T7 - 50 μ /300mm. Shorter lengths or longer lengths up to a maximum of 3000mm available.

For ball screw nuts see parts L1370-L1374 & L1377.

For end screw machining to suit ball screw support units see relevant ball screw supports (L1388-L1406). End machining on request.

L in product no. denotes left hand version.

Replace xxxx with desired rail length eg. **L1375.16-05-1000** is 1000mm long.

Important Notes

Ensure the ball nut can be fitted to the ball screw after machining. Do not remove the ball nut from the sleeve prior to installation - the balls come free rendering the ball nut unusable.

Order No.	Screw dia. x lead	Lead	d ₁	d ₂	d ₃	I ₁ max.	Mass moment of inertia kg·m ²	Weight kg
L1375.16-05-xxxx	16x 5	5	17.08	16	13.90	500	4,45x10 ⁻⁵	0.71
L1375.16L-05-xxxx	16x 5	5	17.08	16	13.90	600	4,45x10 ⁻⁵	0.71
L1375.20-05-xxxx	20x 5	5	21.08	20	17.90	800	1,12x10 ⁻⁴	1.18
L1375.20L-05-xxxx	20x 5	5	21.08	20	17.90	1000	1,12x10 ⁻⁴	1.18
L1375.25-05-xxxx	25x 5	5	26.08	25	22.90	1500	2,62x10 ⁻⁴	1.80
L1375.25L-05-xxxx	25x 5	5	26.08	25	22.90	2000	2,62x10 ⁻⁴	1.80
L1375.32-05-xxxx	32x 5	5	33.08	32	29.90	2500	7,25x10 ⁻⁴	2.99
L1375.32L-05-xxxx	32x 5	5	33.08	32	29.90	3000	7,25x10 ⁻⁴	2.99
L1375.40-05-xxxx	40x10	5	41.08	40	37.90	500	1,81x10 ⁻³	4.72
L1375.40L-05-xxxx	40x10	5	41.08	40	37.90	600	1,81x10 ⁻³	4.72
L1375.50-05-xxxx	50x10	05	52.15	50	45.80	800	4,19x10 ⁻³	7.18
L1375.63-10-xxxx	63x10	10	65.15	63	58.80	1000	1,09x10 ⁻²	11.56
L1375.80-10-xxxx	80x10	10	82.15	80	75.80	1500	2,89x10 ⁻²	18.88



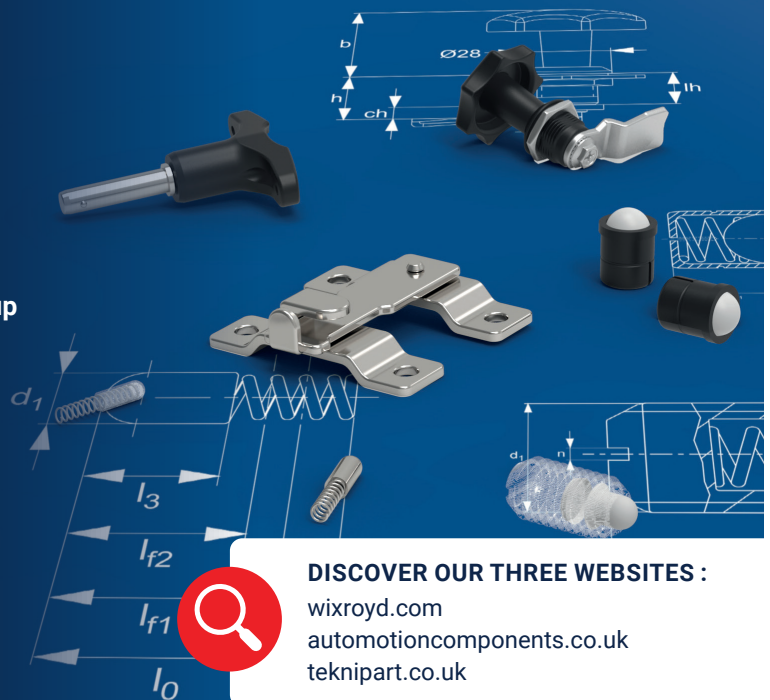
RESOURCES: FREE CAD MODELS

Discover 3D CAD models across all three brand websites

Do you use CAD regularly in your design work? - which Design Engineer doesn't!

With over 60% of our product range available in a wide range of CAD formats, The Wixroyd Group family of websites, is the place to visit and download our CADs for your designs.

- CAD models, **FREE to download** and no registration required.
- CAD models available to download in an array of formats to suit multiple applications. Including; **Acis, IGES, Parasolid, Pro E, Solidworks and Step.**



DISCOVER OUR THREE WEBSITES :

wixroyd.com
 automotioncomponents.co.uk
 tekniart.co.uk

WHY ORDER WITH US?



HIGH STOCK LEVELS

With a high commitment to stock holding, we can offer next day delivery on most products. We deliver what you need, whenever you need it.



STREAMLINE ORDERING PROCESS

Whether you're an account holder or choose to shop as a guest, our on-line ordering system is reliable and easy to use.



MADE IN BRITAIN

Established in 1951, the Wixroyd Group supply innovative engineering products with free online CAD models and in-house technical expertise.



HIGH QUALITY PRODUCTION

Trusted by some of the best known design and manufacturing companies, we pride ourselves on producing the highest quality components at the best value.



TECHNICAL SALES SUPPORT

Available via telephone, email or our live web chat service, we work to find a solution for your application.



BESPOKE CAPABILITIES

Our in-house manufacturing can make your idea a reality. Call our technical team to discuss.

SHAFTS

What is a Linear Shaft?

A linear shaft is a straight, precision machined bar on which linear bearings run to create a linear guide system to support or guide the movement of equipment in a linear fashion. Available in hardened steel, hardened stainless, 303 and 316 stainless, and aluminium.

We can also manufacture on short lead times linear shafts to your drawing with custom machining, keyways, circlips grooves, drilled and tapped holes and more.

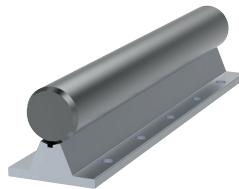


VIEW THE FULL RANGE



Hardened Stainless Shafts - L1772

From the hardest type of stainless steel (AISI 440C) with a ground and polished surface. Ideal for use in applications in which there may be some corrosive materials and demand high wear resistance. Diametres 6-60 mm.



Shaft Support Rails - L1780

Hardened steel shafting or corrosion resistant linear shaft rods mounted on aluminium alloy support rails, for use with open flanged or unflanged carriages. Length up to 6 metres.



Hardened Steel Shafts - L1770

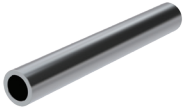
Hardened steel linear shafting generally for use with linear bearings. The load capacity of each shaft rod depends on the length of the shaft and how it is supported.

AN OVERVIEW OF OUR STANDARD PARTS IN THIS RANGE

LINEAR SHAFTS

Our large range of linear shafting includes hardened steel shaft bars, corrosion resistant shaft bars and hollow shaft bars. We can also modify these standard shafts (drilling, tapping etc) to your requirements.

L1771 HARDENED CARBON STEEL HOLLOW SHAFT



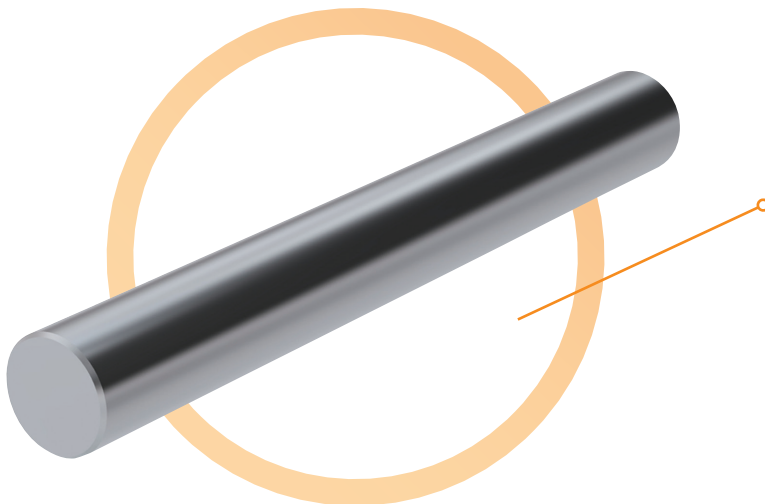
Used in applications where weight reduction is important. Available diametres of between 12Ø to 60Ø h6 tolerance. Use with our linear bearings.

L1772 CORROSION RESISTANT 440C SHAFT



This hardened shaft is the one to use if you require corrosion resistance but also need to use linear bearings. Available diametres 06Ø to 60Ø. Use with our stainless steel linear bearings.

L1770 : HARDENED CARBON STEEL LINEAR SHAFT



L1770

Our most popular shaft! Available in diametres of between 05Ø to 60Ø with a surface hardness of 60-66 HRC. Use with our linear bearings. All our linear shafts are made to a standard h6 tolerance. Special tolerances available upon request.

L1773 / L1774 303/316 STAINLESS STEEL SHAFT



Superior corrosion resistance compared to 440C shafts. These offer ultimate protection when looking for corrosion resistance. Available diametres 06Ø to 60Ø.

L1778 ALUMINIUM SHAFT



With an oxide ceramic coating for where weight saving is a priority. This is also non-magnetic with a surface hardness of >80 HRC. Designed to be used with self-lubricating ceramic bearings (L1764 to L1769).



PRODUCTS ▼



Linear Bearings & Shafts >

Shafts



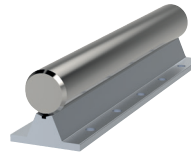
Hardened Hollow Shafts - L1771

Used in linear bearing and guideway systems where weight reduction is important. Hollowed for lighter weight. Ø12 to Ø50.



Stainless AISI 303 Shafts - L1773

To be used with ceramic or other bearings not containing hardened ball bearings. Soft stainless. High anti-corrosion. Ø6 to Ø60.



Shaft Support Rails - L1781

Complete shaft and rail. For open linear bushings. Ensures a very rigid and stiff system. The shaft is pre-mounted to the shaft support rail.



Stainless AISI 316 Shafts - L1774

Marine grade. Soft stainless, very high anti-corrosion. Not for ball bushing linear bearings, but with sleeve type linear bearings & ceramic bearings. Ø6 to Ø60.



Aluminium Shafts - L1778

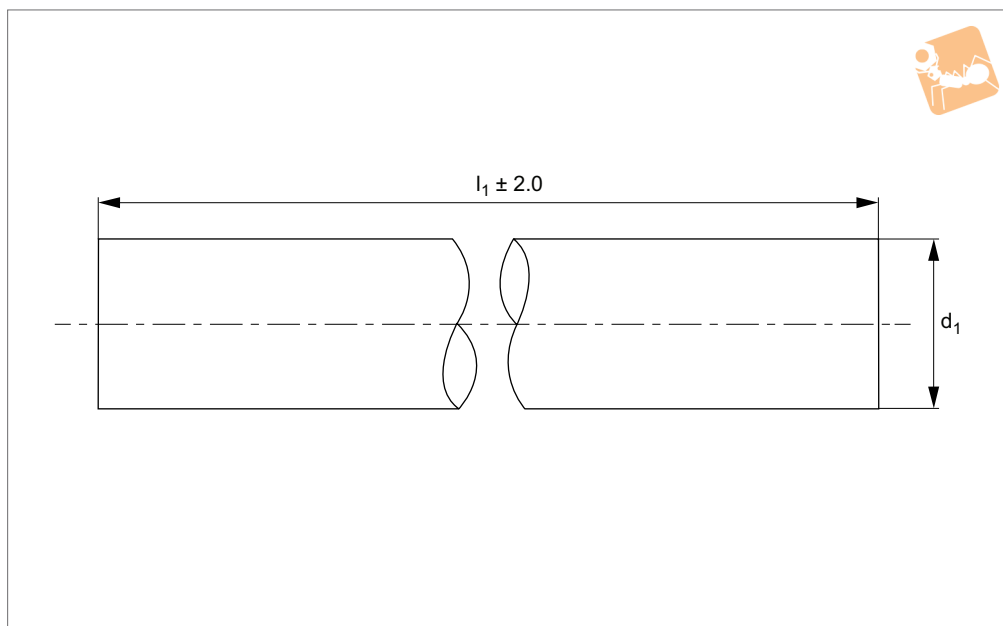
Lightweight aluminium linear shafts, coated with hard aluminium oxide, to increase durability. Non-magnetic. Used with self-lubricating ceramic linear bushes. Ø8 to Ø50.



LINEAR



L1770



Material

Carbon steel (070M55,Cf53 - DIN 1.1213), Surface hardness 60-66 HRC. Surface finish 0.3-0.6 μ Ra, ground and polished to 8-12 cla. Yield stress: >325 N/mm², tensile strength: >630 N/mm².

Technical Notes

Tolerance, h6 standard, special tolerances upon request. Suitable for use with linear bearings. Straightness 0.2mm/m.

retainer grooves, special coatings etc. are available. Shaft lengths are cut to typically ± 2 mm, ends are not hardened.

Tips

Modifications, drilled and tapped holes,

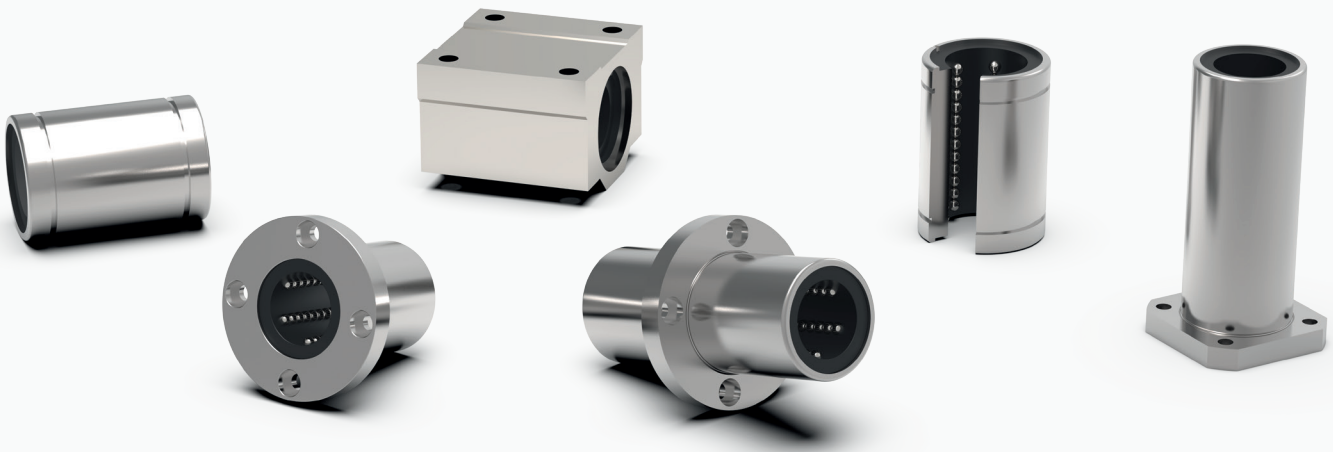


Replace xxxx with desired shaft length. E.g L1770.05-1600 is 1600mm long.

Order No.	d_1 tol. h6	l_1 max	Depth of hardness min.	Weight kg max
L1770.05-xxxx	5	6000	0.4	0.96
L1770.06-xxxx	6	6000	0.4	1.38
L1770.08-xxxx	8	6000	0.4	2.40
L1770.10-xxxx	10	6000	0.4	3.72
L1770.12-xxxx	12	6000	0.6	5.34
L1770.16-xxxx	16	6000	0.6	9.48
L1770.20-xxxx	20	6000	0.9	14.82
L1770.25-xxxx	25	6000	0.9	23.10
L1770.30-xxxx	30	6000	1.5	33.30
L1770.40-xxxx	40	6000	1.5	59.22
L1770.50-xxxx	50	6000	1.5	92.40
L1770.60-xxxx	60	6000	1.5	133.20

BEARINGS



What is a Linear Bearing?

A Linear Bearing, also known as a linear ball bush or bushing, is a bearing that runs on a hardened linear shaft to help guide or support the movement of a component in a linear fashion. A cost effective method of achieving linear motion where the loads are light enough to not need conventional linear guides or where the guide can only be supported at the ends and not over the entire length.



Closed Linear Ball Bushings - L1706

Closed linear ball bearings - 5mm to 60mm. For use with hardened shafts only.

Linear Carriages - L1750

Aluminium body, with linear bearing. For use with hardened shafts only.

Flanged Linear Ball Bushings - L1718

Circular ball bushing for shafts from 6mm to 60mm diameter. Used with hardened shafts only.



PRODUCTS ▼



Linear Bearings & Shafts >

Bearings



Flanged Linear Ball Bushings - L1719

Square flanged ball bushing for shafts from 6mm to 60mm diameter. Used with hardened shafts only.



Long Flanged Linear Ball Bushings - L1722

Long, circular flanged linear ball bushings - 6mm to 60mm. Double complement bearings.



Open Linear Ball Bushings - L1707

Linear ball bushings for use on hardened shafts.



Long Linear Ball Bushings - L1712

For use with hardened shafts only, steel ball retainers can be supplied for higher temperature applications up to 120 °C.



Ceramic Closed Linear Bearings - L1764

Ceramic closed linear bearings. Made with with aluminium-oxide ceramic coating.



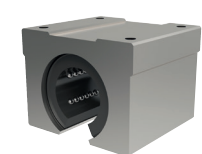
Ball Bushings - L1709

Stainless steel closed ball bushings. For use with corrosion resistant hardened shafts.



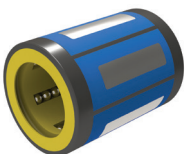
Open Linear Ball Bushing Carriages - L1752

Open linear ball bushing carriages. Particularly effective for high loads and long stroke applications.



Stainless Unflanged Carriages - L1753

Open stainless unflanged carriages. Aluminium carriage housing. For use with shaft support rails.



Compact Linear Ball Bushings - L1715

Low cost, compact. Durable plastic body with corrosion resistant hardened steel raceway segments.



Stainless Ball Bushings - L1720

Circular flange ball bushings to use with corrosion resistant hardened shafts.



Long Flanged Linear Ball Bushings - L1723

Long, square flanged linear ball bushings - 6mm to 60mm. Double complement bearings.



Stainless Ball Bushings - L1725

Double complement. For use with corrosion resistant hardened shafts.



PRODUCTS ▼



Linear Bearings & Shafts >

Bearings



Superball Closed Linear Ball Bushings - L1740

Superball, linear ball bearings. 10mm to 50mm. Floating plate feature offers self-alignment and clearance adjustment.



Long Centre Flange Linear Ball Bushing - L1730

Circular flange. For use with hardened shaft only.



Linear Ball Bushings - L1731

Double length. Linear ball bushings for use on hardened shafts.



Stainless Ball Bushings - L1732

Long version. Circular centre flange. For use with hardened shaft only.



Stainless Ball Bushings - L1733

Long version. Square centre flange. For use with corrosion resistant hardened shafts.



Flanged Linear Carriages - L1755

Open. For use with shaft support rails. Particularly effective for high loads and long stroke applications.



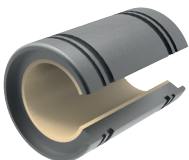
Ceramic Closed Linear Bearings - L1765

Self-lubricating. Ceramic bearings are ideal for use on all shaft bar materials.



Ceramic Open Linear Bearings - L1766

Ceramic bearings are ideal for use on all shaft bar materials, hardened or soft.



Ceramic Open Linear Bearings - L1767

Self-lubricating. Ceramic bearings are ideal for use on all shaft bar materials, hardened or soft.

TECHNICAL INFORMATION

LOAD RATING

Basic dynamic load rating C

The basic dynamic load rating is defined as the constant load both in direction and magnitude under which a group of identical linear bushings are individually operated. 90% of the units can travel 50Km without failing due to rolling contact fatigue.

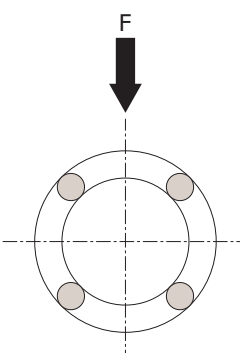
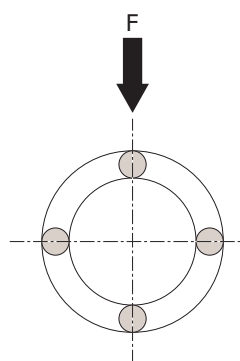
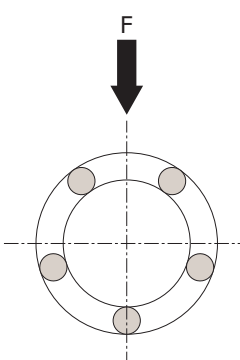
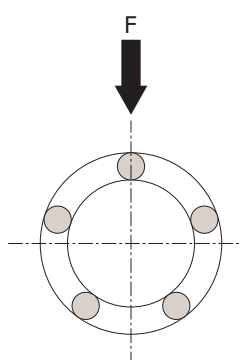
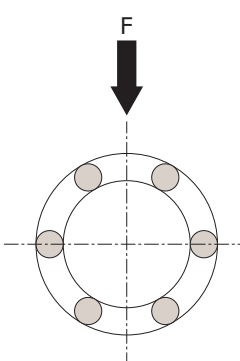
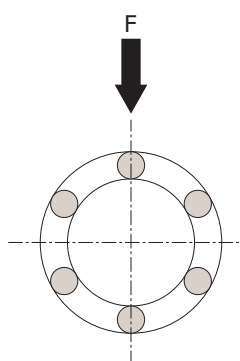
Basic static load rating C₀

If a linear bushing is subject to an excessive load or impact, a permanent deformation occurs between the raceway and the rolling element. The basic static load rating is defined as the static load that gives a prescribed constant contact stress at the centre of the contact area between the rolling element and raceway receiving the maximum load.

Relationships between load ratings and the position of ball circuits

Load ratings of linear bushing are affected by the position of the ball circuits as shown below.


Load ratings and orientation of balls.

No of ball rows	Orientation of balls	
	Maximum load rating	Minimum load rating
4		
	$F = 1.41 \times C$	$F = C$
5		
	$F = 1.46 \times C$	$F = C$
6		
	$F = 1.26 \times C$	$F = C$

CROSSED ROLLER RAILS & TABLES


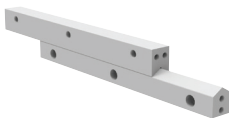
What are Crossed Roller Rails & Tables?

Crossed roller rails and tables represent low-profile, high-precision solutions for linear support and guidance, ensuring elevated accuracy, repeatability, and minimal friction. Crossed roller tables, in particular, excel in handling higher loads compared to their ball bearing counterparts of similar dimensions. Whether you need lightweight aluminium rails for use in aviation applications or stainless steel components for when exposure to water or corrosive chemicals is a factor, we have a range of options to a variety of requirements.




Crossed Roller Rail Sets - L1000

Supplied in sets of 4 rails - with 2 roller cages and 8 end screws as standard. Can be cut to length, but this affects load rating.

Anti-friction Coated V Rail - L1006.V

High load capacity. Primarily used as dirt-proof units, to reduce system vibration and improve rigidity.

Crossed Roller Tables - L1020

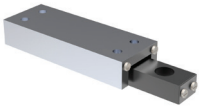
Base and carriage with standard hole pattern. Top can be machined as required.

PRODUCTS



Linear Tables, Positioning Stages & Crossed Roller Sets >

Crossed Roller Rails & Tables



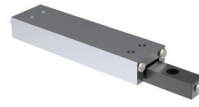
Ball Slide Assemblies - L1024

Standard precision. Stroke is centred on the mid-point of the slides.



Low Profile Ball Slide Assemblies - L1030

High precision. Stroke is centred on the mid-point of the slides.



Crossed Roller Slides - L1029

Precision. Stroke is centred on the mid-point of the slides.



Low Profile Crossed Roller Table - L1032

High precision. Stroke is centred on the mid-point of the slides.



Stainless Cross Roller Slides - L1022.we

Smaller sizes.



Anti-Creep Ball Slide Assemblies - L1038

The anti-creep retainer used in these units, prevent ball retainer misalignment.



Non-Magnetic Ball Slide Assemblies - L1039

No lubrication required due to self-cleaning ball bearing design.



Ball Slide Assemblies - L1028

Precision. Stroke is centred on the mid-point of the slides.



Crossed Roller Slides - L1026

Standard precision. Stroke is centred on the mid-point of the slides.



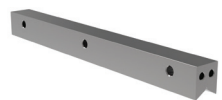
Stainless Crossed Roller Rail Sets - L1001

Supplied in sets of 4 rails - with 2 roller cages and 8 end screws as standard.



Needle Roller Rail Sets - V Rail - L1004.V

High load capacity. Usually supplied in a set of 4, with needle rollers in aluminium cage, GM end stops.



Needle Roller Rail Sets - M Rail - L1004.M

High load capacity. Usually supplied in a set of 4, with needle rollers in aluminium cage, GM end stops.

TELESCOPIC SLIDES

What is a Telescopic Slide?

Telescopic slides, also known as telescopic rails or drawer runners, are most commonly used in pairs. Primarily designed for sliding drawers, doors, and platforms, they find application in scenarios where linear movement is necessary, but standard linear guides are impractical due to length constraints. Whether facilitating horizontal or vertical linear travel, these telescopic slides offer a practical alternative, allowing for smooth and controlled motion without the need for extended guides spanning the entire travel length.

VIEW THE FULL RANGE



 Automotion
AN ESSENTRA COMPANY



Fully Telescopic Slides - L1986.22

Strong and rigid with high load capacities. Only to be used for horizontal movements.

 Automotion
AN ESSENTRA COMPANY



Partially Telescopic Slides - L1994.22

Semi-telescopic rails with high load capacities.

 Automotion
AN ESSENTRA COMPANY



Fully Telescopic Slides, Size 28 - L1984.28

Extremely strong and rigid slides with high load capacities.



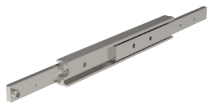
PRODUCTS ▾



Telescopic Slides



Telescopic Slides



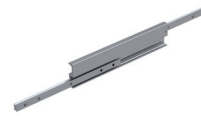
Stainless AISI 316 Slides - L2051

Ideal for applications requiring a high degree of corrosion resistance.



Aluminium Telescopic Slides - L2041

High quality grade aluminium with steel ball bearings and cage. Full Extension.



Fully Telescopic Slides LTF - L1992

Our lightest duty telescopic slides. Still from cold-drawn steel, both with unhardened raceways.



Fully Telescopic Slides - L1988.22

This slide is compact, low profile and square shaped.



Stainless Medium Duty Full Extensions - L1989

These are full extension slides made from 316L stainless steel.



Extended Stroke Telescopic Slides - L1997

These are extended stroke (150%), heavy duty telescopic rails, with high load capacity and stiffness.



Extended Stroke Telescopic Slides - L1998

These are extended stroke (150%), heavy duty telescopic rails.



Fully Telescopic Slides - L1996

Able to support heavy loads up to nearly 2000kg.



Fully Telescopic Slides - L1995

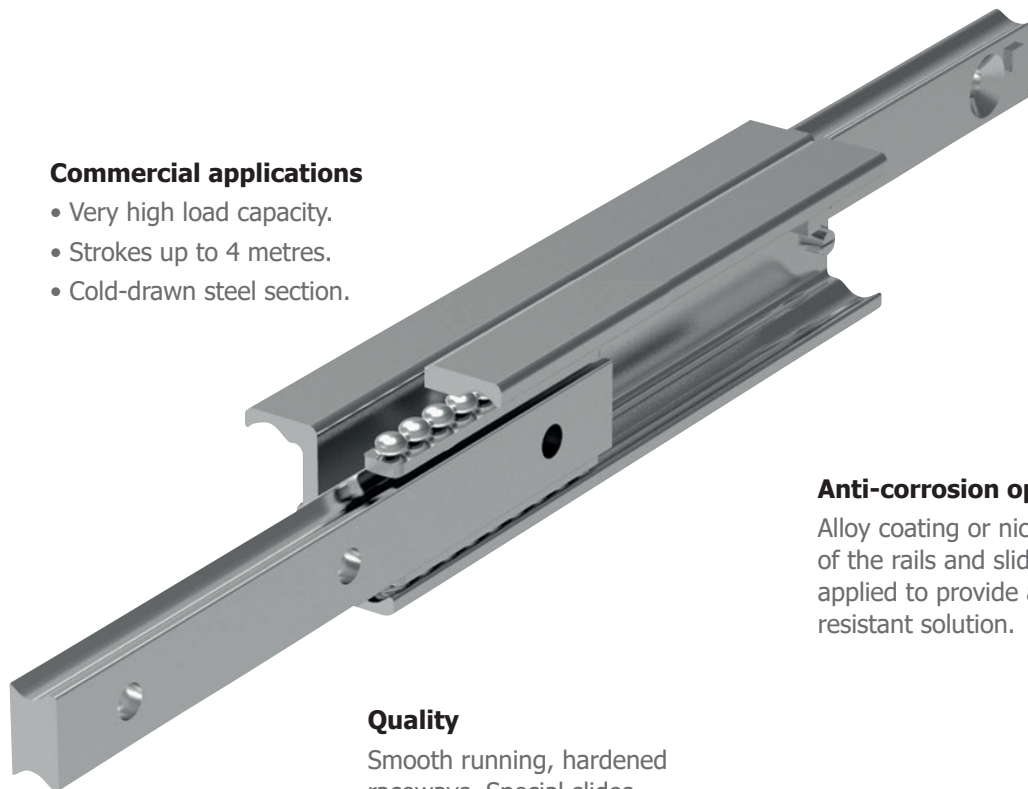
Our lightest duty telescopic slides. Still from cold-drawn steel, both with unhardened raceways.

TELESCOPIC SLIDES

If you are looking for heavy duty, quality telescopic slides for industrial or commercial applications then these are the slides for you!

The best heavy duty telescopic slides on the market

These are unique slides that are not made from pressed steel but from cold-drawn steel section. The slides can take high loads, with very long strokes, with repeated use, low deflection and minimal play.



Commercial applications

- Very high load capacity.
- Strokes up to 4 metres.
- Cold-drawn steel section.

Anti-corrosion option

Alloy coating or nickel plating of the rails and sliders can be applied to provide a corrosion resistant solution.

Quality

Smooth running, hardened raceways. Special slides available.

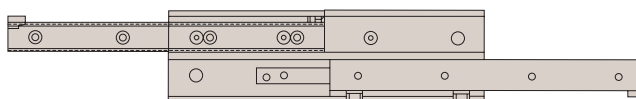
Rail types

Our range of telescopic rails covers partial, full stroke and over-extension.

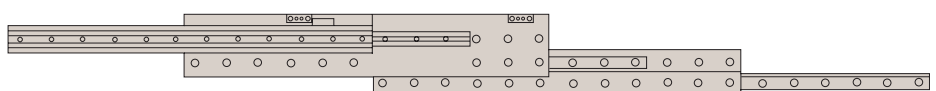
For more information refer to our product specifications pages or call our technical department.



Partial Stroke (~60%)



Full Stroke (~100%)



Over-extension (150%)



Proud to be an Essentra Company

You'll know **Essentra Components** as a trusted expert in the manufacture of injection moulded parts for over 65 years, including protective caps and plugs, wire and cable management and access hardware and over 45,000 other essential components.

The acquisition of the **Wixroyd Group** marks an exciting addition for **Essentra Components**, consisting of **two leading brands in engineering components; Wixroyd and Automotion**, suppliers of machine accessories, design elements, workholding, mechanical components, linear components and linkages & rotary components with over 100,000 parts in stock.

Take the opportunity to check out just some of the product highlights from the **Wixroyd Group** in this catalogue and visit their websites for the full range of products. With over 70 years of experience, we have a reputation for high quality components delivered with an excellent level of customer service, and continue to **Deliver a Range of Endless Possibilities.**

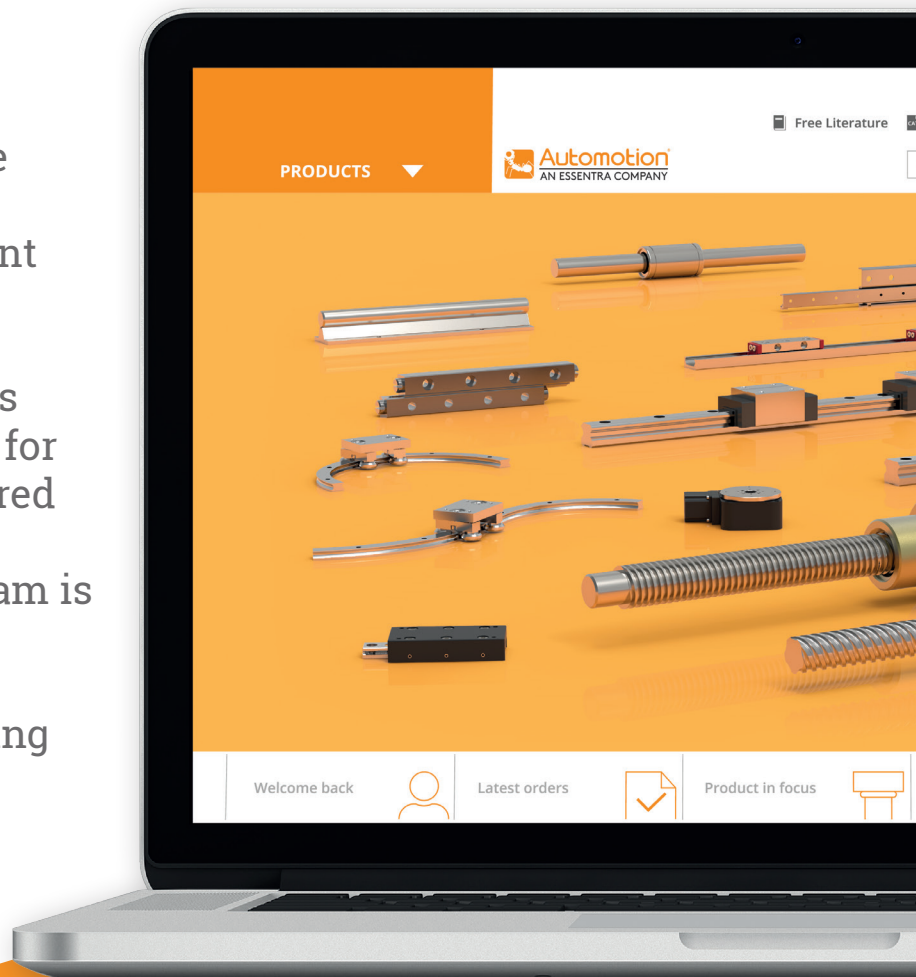


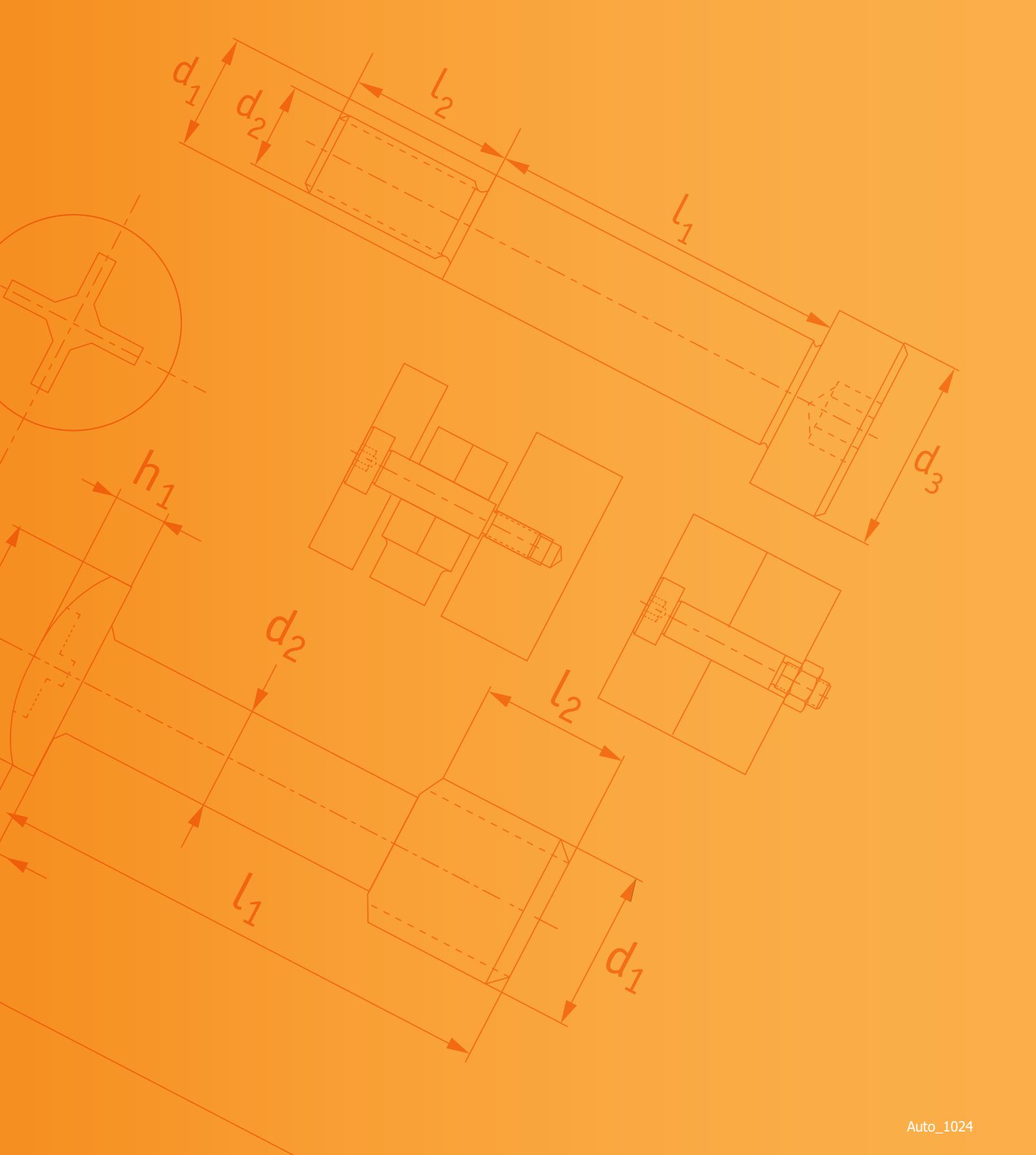
www.wixroyd.group
Follow us @WixroydGroup



EASILY BROWSE OVER 50,000 PRODUCTS AT automationcomponents.co.uk

- ▶ Easy-to-navigate website
- ▶ Efficient company account management features
- ▶ Free CAD files, datasheets and catalogues available for download, no login required
- ▶ Our technical support team is always on hand
- ▶ Live stock & price checking





Auto_1024



Automation[®]
AN ESSENTRA COMPANY

Automation Components Ltd
Alexia House, Glenmore Business Park
Portfield Works, Chichester, PO19 7BJ (UK)

0333 207 4498

automationcomponents.co.uk